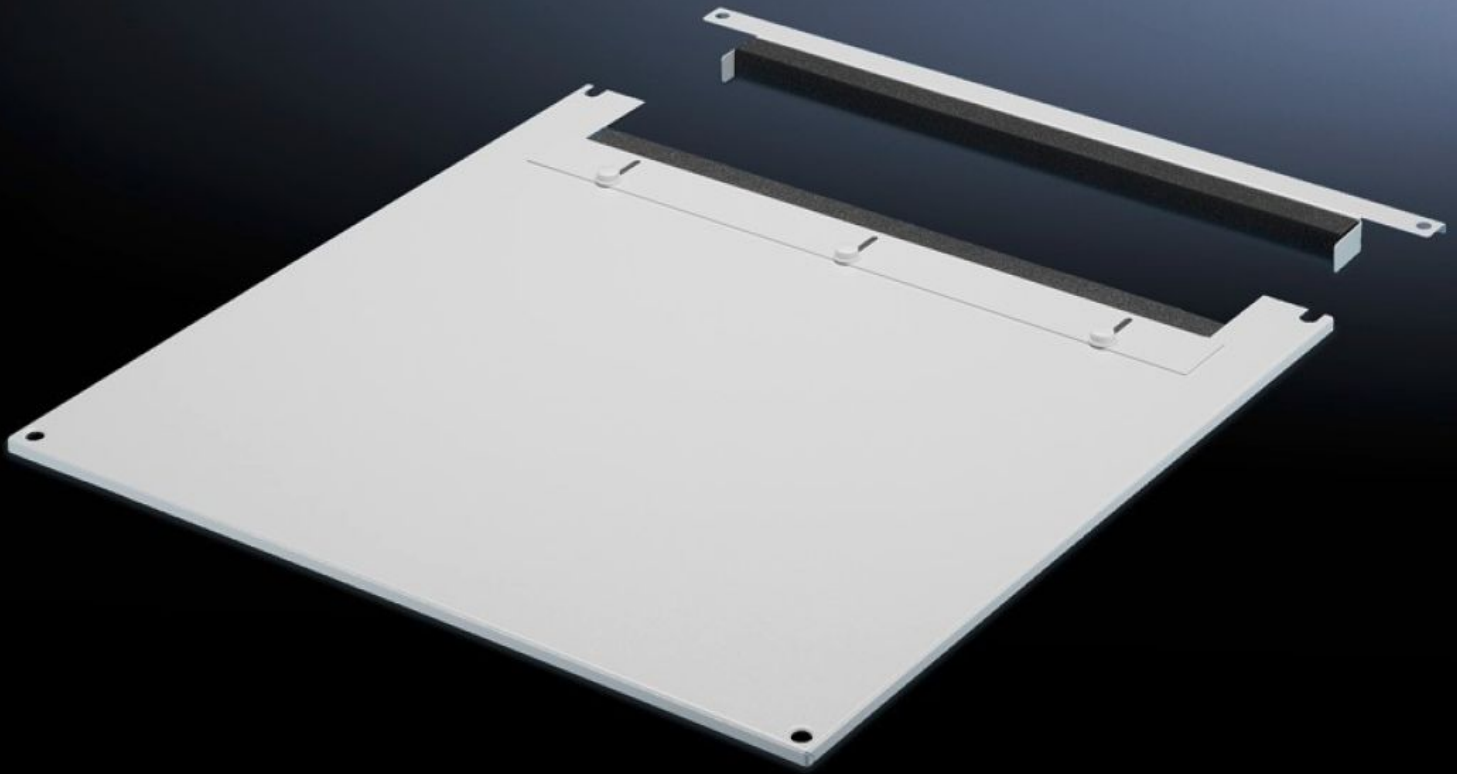


Rittal – The System.

Faster – better – everywhere.



TS 7826.665

Roof plate for cable entry, two-piece

State: 2026-05-14 (Source: [rittal.com/ca-en](https://www.rittal.com/ca-en))

ENCLOSURES

POWER DISTRIBUTION

CLIMATE CONTROL

IT INFRASTRUCTURE

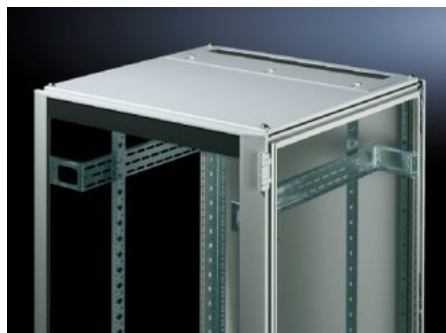
SOFTWARE & SERVICES

FRIEDHELM LOH GROUP



TS 7826.665 - Roof plate for cable entry, two-piece for VX, VX IT, TS, TS IT

The two-piece design additionally allows for easy retro-fitting, by simply removing the front part of the plate for retrospective cable entry.



Features

Model No.	TS 7826.665
Product description	To replace standard roof. Fitted with a sliding bracket at the rear. Rubber clamping profile on both sides to secure cable bundles and wiring harnesses. The symmetrical design of the frame allows for cable entry from the side by rotating the roof plate. The two-piece design allows for easy retro-fitting.
Material	Carbon steel
Color	RAL 7035
Suitable for	Width: 600 mm Depth: 600 mm
Packaging unit	1 pc(s).
Net weight	5.136 kg
Gross weight	5.38 kg
Customs tariff number	94039910
ETIM 9	EC000744
ECLASS 8.0	27182405
Product description	DK-TS8 Roof plate, WxD: 600x600 mm, 2-part, For cable entry