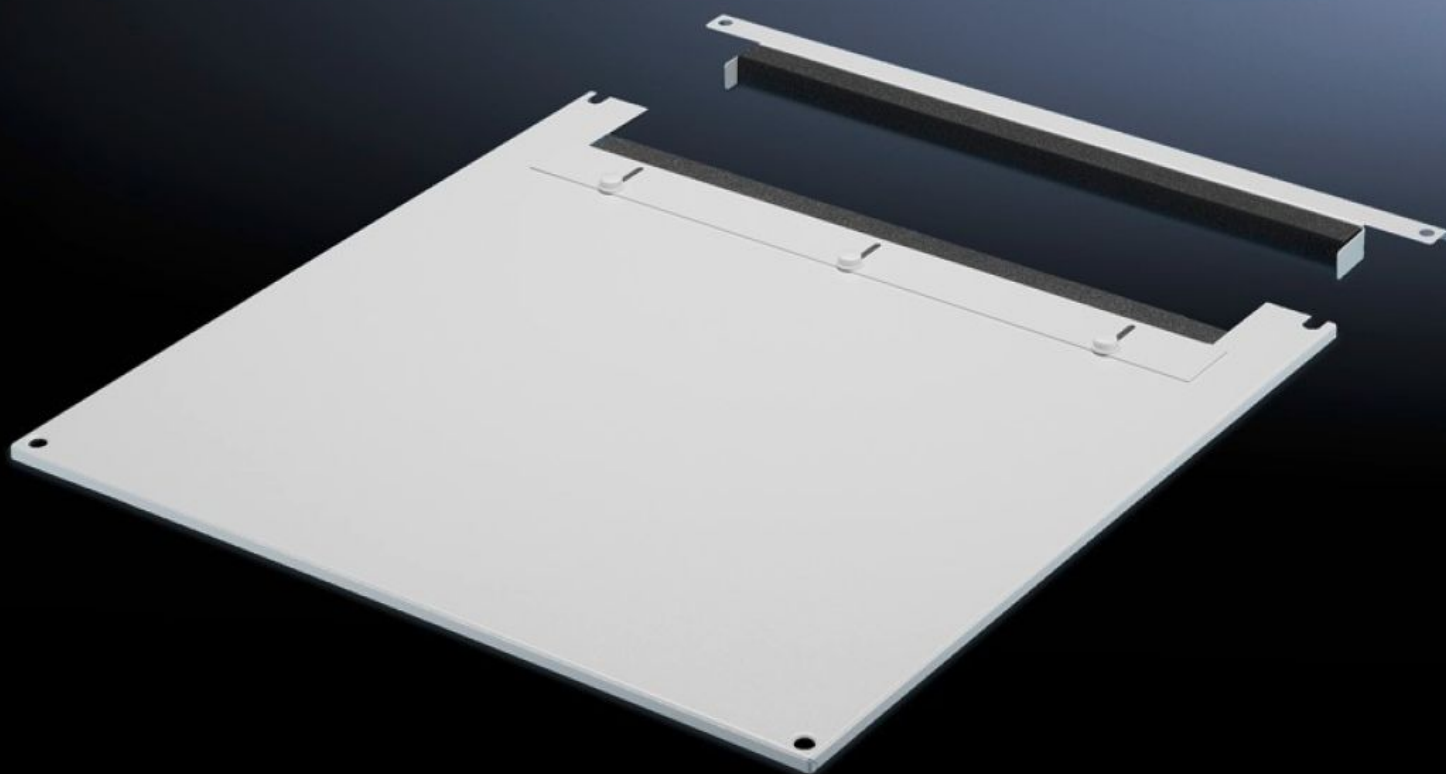
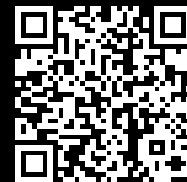


Rittal – The System.

Faster – better – everywhere.



TS 7826.885

Roof plate for cable entry, two-piece

State: 2026-01-31 (Source: [rittal.com/ca-en](https://www.rittal.com/ca-en))

ENCLOSURES

POWER DISTRIBUTION

CLIMATE CONTROL

IT INFRASTRUCTURE

SOFTWARE & SERVICES

FRIEDHELM LOH GROUP



TS 7826.885 - Roof plate for cable entry, two-piece for VX, VX IT, TS, TS IT

The two-piece design additionally allows for easy retro-fitting, by simply removing the front part of the plate for retrospective cable entry.



Features

Model No.	TS 7826.885
Product description	To replace standard roof. Fitted with a sliding bracket at the rear. Rubber clamping profile on both sides to secure cable bundles and wiring harnesses. The symmetrical design of the frame allows for cable entry from the side by rotating the roof plate. The two-piece design allows for easy retro-fitting.
Material	Carbon steel
Color	RAL 7035
Suitable for	Width: 800 mm Depth: 800 mm
Packaging unit	1 pc(s).
Net weight	9.017
Gross weight	9.492
Customs tariff number	94039910
EAN	4028177345362
E-Number Sweden	E7239742
ETIM 9	EC000744

Features

ECLASS 8.0

27182405