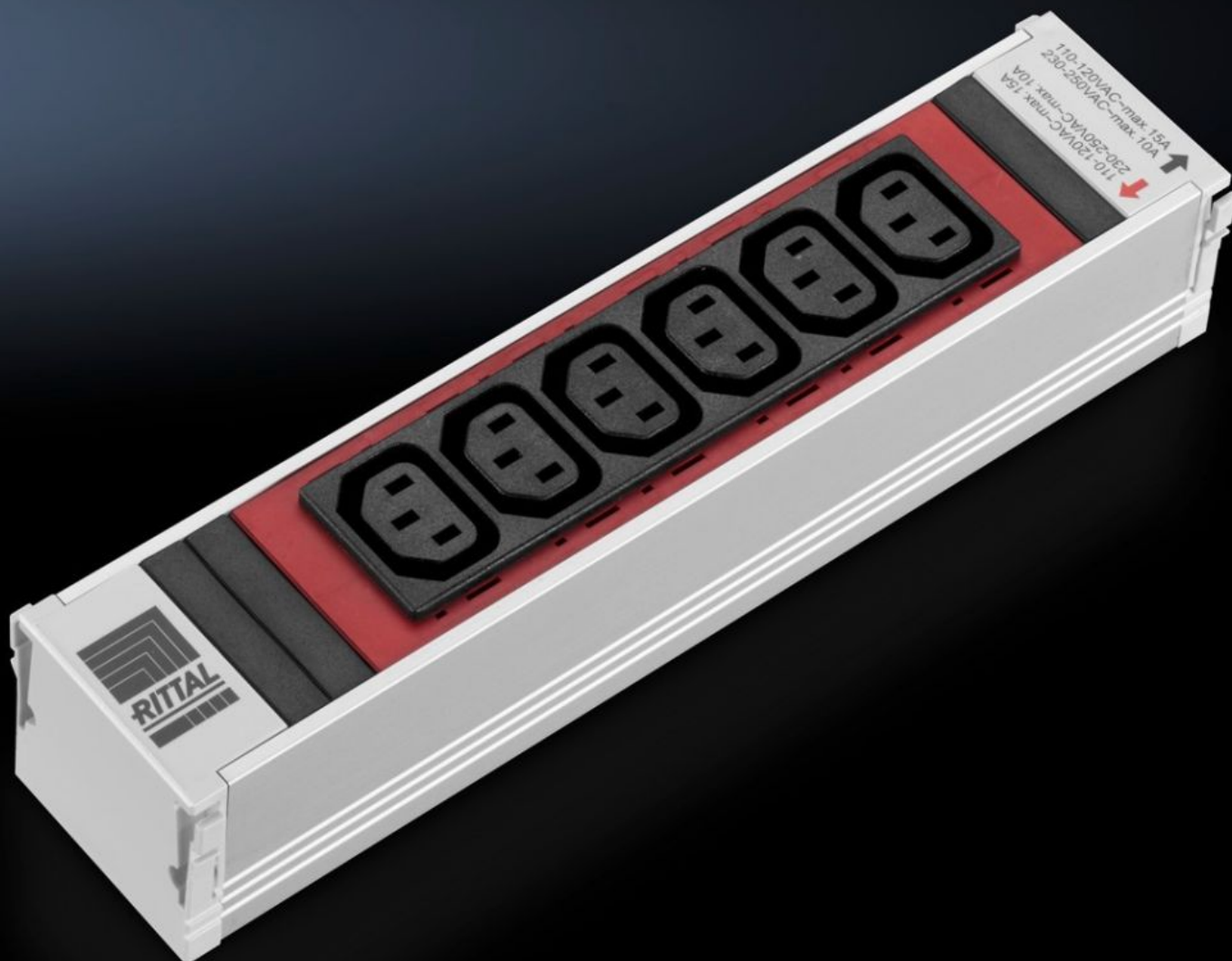


Rittal – The System.

Faster – better – everywhere.



DK 7856.082 PSM Outlet Modules

State: 2025-07-26 (Source: [rittal.com/ca-en](https://www.rittal.com/ca-en))

ENCLOSURES

POWER DISTRIBUTION

CLIMATE CONTROL

IT INFRASTRUCTURE

SOFTWARE & SERVICES

FRIEDHELM LOH GROUP



DK 7856.082 - PSM Outlet Modules

The various modules and ground contacts can be inserted into the support rail in any combination.

Features

Model No.	DK 7856.082
Version	non-switchable
Product description	The modular system enables basic configuration of the racks using a vertical support rail with single/three-phase infeed. The different socket modules can be snapped into position in the support rail to supply the active components. The various modules, ground contacts and IEC320 can be inserted into the support rail in any combination. This is easily achieved, even by non-electricians, thanks to the shock hazard protected plug & play system.
Material	Profile: Aluminum, anodized Socket inserts: Plastic (PA6 GF 30 V1)
Length	250 mm
Type of connection (electrical)	WAGO WINSTA MIDI
Phases per infeed	1~
Thermal overcurrent protection	–
Rated operating voltage	110 V – 230 V AC, 50/60 Hz
Rated current (max.)	16 A
Required module slots (quantity)	1
Dimensions	Length: 250 mm
Operating temperature range	5 °C...45 °C
Ambient humidity (non-condensing)	5...95 %
Outlets	6 x Non-Heating Apparatus Socket C13, Red
Packaging unit	1 pc(s).

Features

Net weight	0.33
Gross weight	0.338
Customs tariff number	85369001
EAN	4028177520318
ETIM 9	EC000330
ECLASS 8.0	27142604

Approvals

Approvals	IEC CB VDE
Explanations	Declaration of conformity