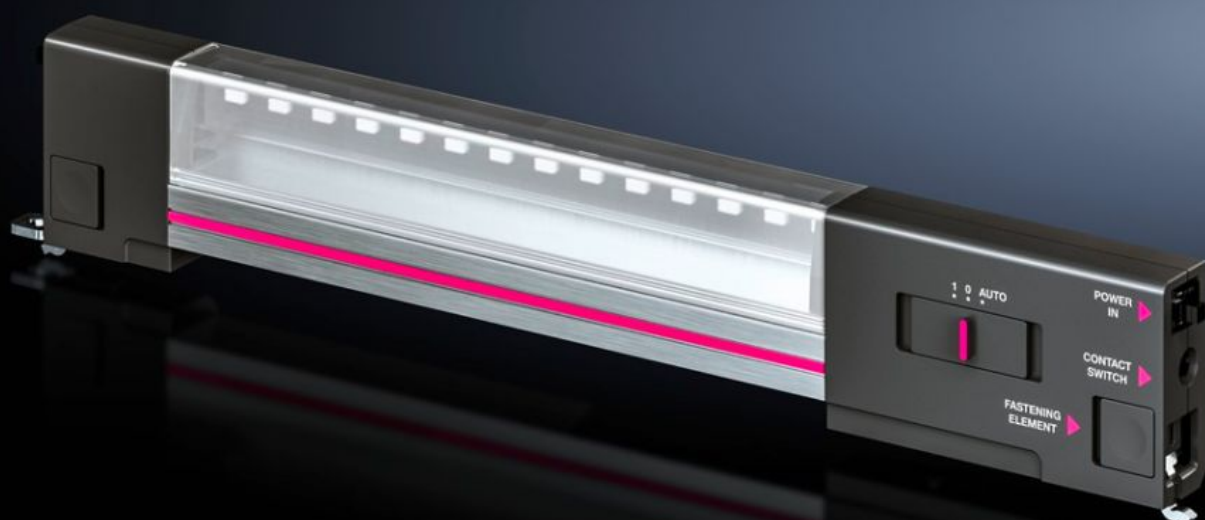


Rittal – The System.

Faster – better – everywhere.



DK 7859.000 IT LED system light

State: 2025-12-10 (Source: rittal.com/ca-en)

ENCLOSURES

POWER DISTRIBUTION

CLIMATE CONTROL

IT INFRASTRUCTURE

SOFTWARE & SERVICES

FRIEDHELM LOH GROUP



DK 7859.000 - IT LED system light for IT enclosure systems and IT enclosures

For perfect illumination of IT enclosure systems and IT enclosures.



Features

Model No.	DK 7859.000
Version	Insulated with internal fuse (T2A)
Product description	For optimum illumination of a network enclosure.
Benefits	Manual or automatic switching via door contact switch possible Optimum illumination of the entire enclosure Plug & play quick assembly Option of clip-on, screw or magnetic attachment Immediately ready for use due to plug-in connection cable Attachment with no loss of height units.
Material	Light body: Extruded aluminum Light cover: polycarbonate Light ends: PC-ABS
Color	Enclosure: RAL 7016
Supply includes	IT LED system light Magnet mounting kit Assembly screws
Connection options	Power supply through connector Door-operated switch

Features

Protection category	II (total insulation)
Switch (type)	Integrated, on/off/door-operated switch
Light – installation type	Screw fastening Clip fastening Magnet fastening
Installation options	Screw or clip directly to the VX IT/VX SE profile TE 8000, IT enclosure: with magnet mounting kit AX, TP: with magnet fastening kit AX: with rail for interior installation For operating with a CEE 7/16 Euro-plug or a chiller plug
Luminous flux	600 lm
Light color	4000 K (neutral white)
Note	The plug-in connection cables can only be used with the IT LED system lights Cascading multiple LED IT system lights is not possible
Dimensions	Width: 337 mm Height: 55 mm Depth: 23 mm
Operating temperature range	-20 °C...55 °C
Protection category IP to IEC 60529	IP 20
Packaging unit	1 pc(s).
Net weight	0.38
Gross weight	0.401
Customs tariff number	94054990
EAN	4028177817937
ETIM 9	EC000321
ECLASS 8.0	27189241

Approvals

Approvals

UL

Explanations

Declaration of conformity