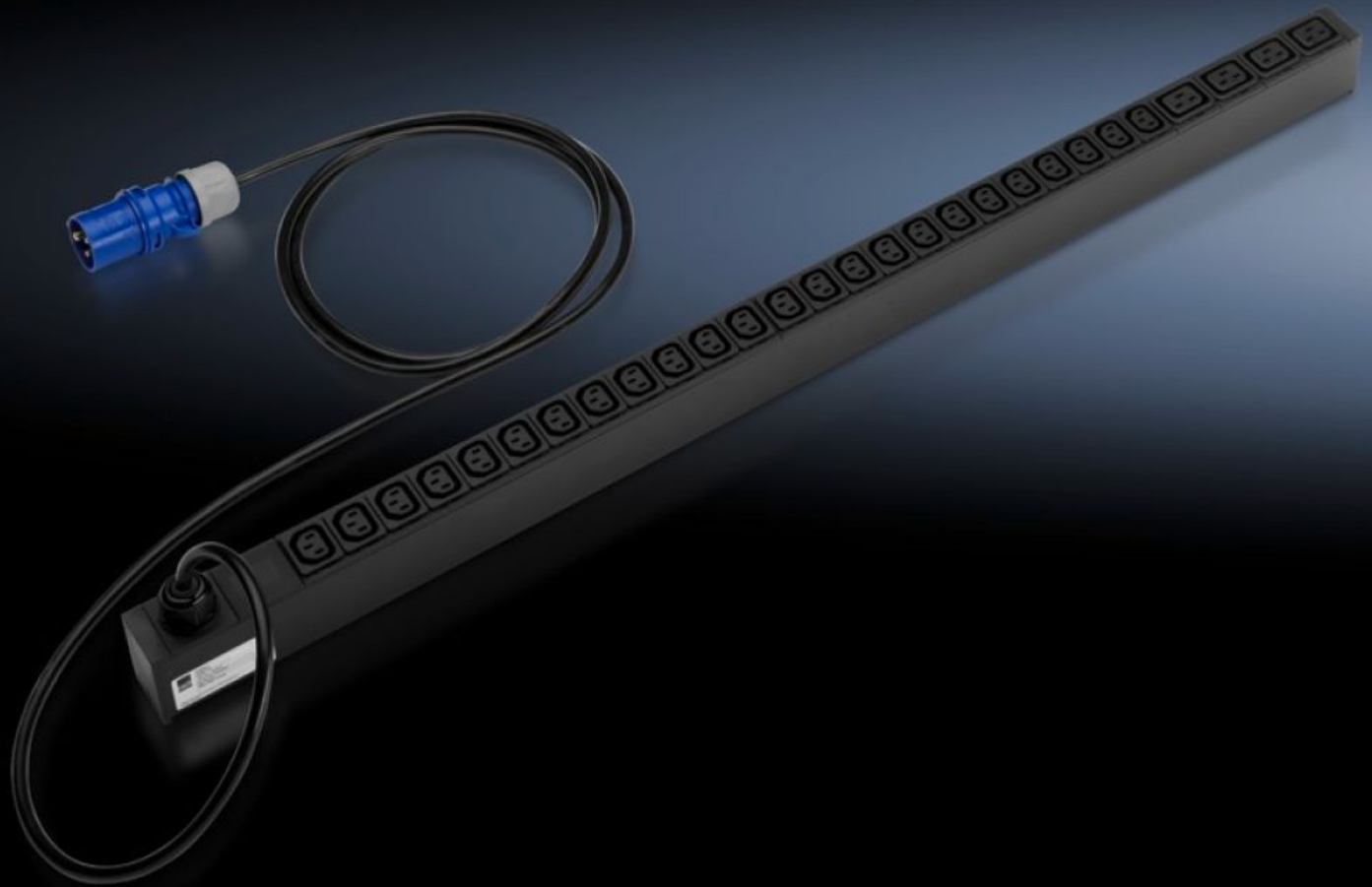


Rittal – The System.

Faster – better – everywhere.



DK 7955.110

PDU international, basic version

State: 2026-06-08 (Source: [rittal.com/ca-en](https://www.rittal.com/ca-en))

ENCLOSURES

POWER DISTRIBUTION

CLIMATE CONTROL

IT INFRASTRUCTURE

SOFTWARE & SERVICES

FRIEDHELM LOH GROUP



DK 7955.110 - PDU international, basic version

IT rack power distributor in a range of designs. Input with CEE plug (16 A/32 A) and C13 and C19 outputs. Distribution output from 3.7 kW to 22 kW.

Features

Model No.	DK 7955.110
Version	PDU Basic
Product description	Robust, compact basic power distributor for the IT environment. Thanks to the compact PDU, all IT racks can easily be equipped with a professional power distribution system. In the case of the TS IT rack, mounting is even possible without tools. The compact design enables easy mounting.
Material	Aluminum section, black anodized
Dimensions	Width: 44 mm Depth: 62 mm Length: 970 mm
Number of sockets and type	24 x C13 / 4 x C19
Outlets	24 x Non-Heating Apparatus Socket C13 4 x Non-Heating Apparatus Socket C19
Rated current (max.)	16 A
Infeeds	Qty.: 1 Phases per infeed: 1~
Length of connection cable	3 m
Type of connection (electrical)	CEE
Guidelines	EMC Directive 2014/30/EU Low-Voltage Directive 2014/35/EU
Standards	EN 60950-1
Operating temperature range	0 °C...45 °C
Ambient humidity (non-condensing)	10...95 %

Features

Storage temperature range	-25 °C...70 °C
Suitable for	Enclosure type: TS IT: ≥ 1,200 mm
Packaging unit	1 pc(s).
Net weight	3.133 kg
Gross weight	3.333 kg
Customs tariff number	85366990
ETIM 9	EC002762
ECLASS 8.0	27142604
Product description	DK PDU international, basic version, Compact basic power distributor, WLD: 44x970x62 mm, 24xC13, 4xC19, black, CEE, 1~, 16 A