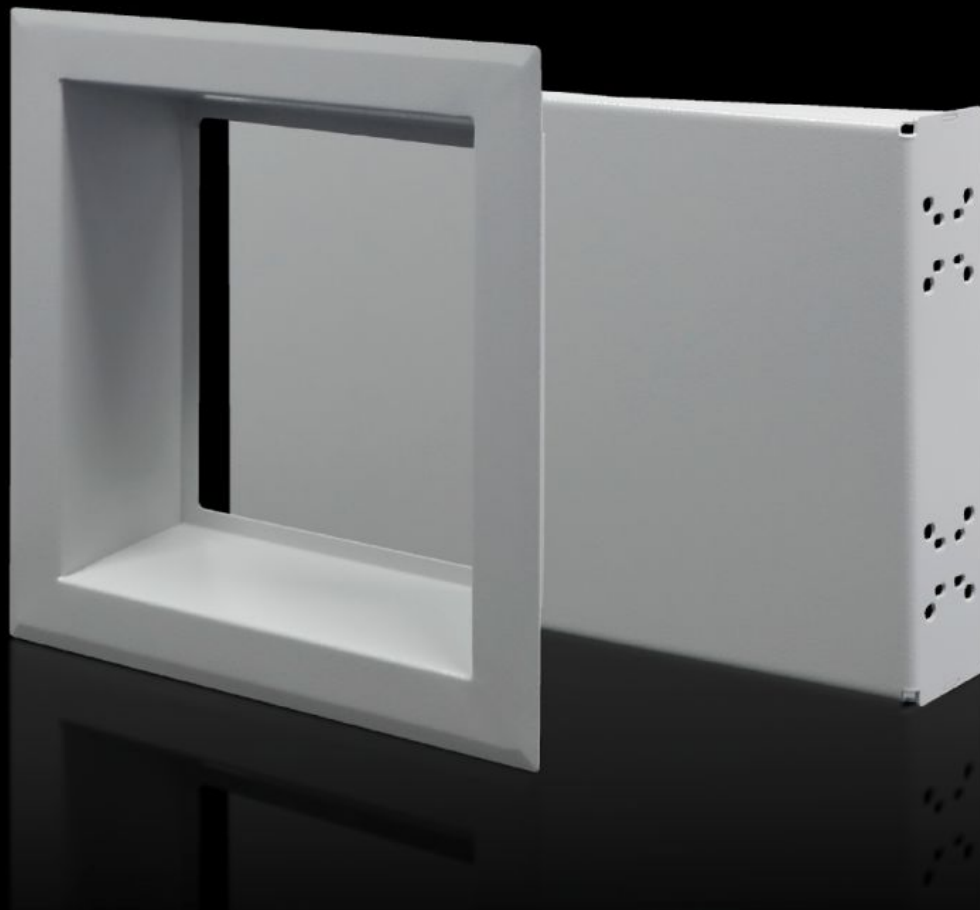


**Rittal – The System.**

Faster – better – everywhere.



**SZ 7993.146**

**Main switch mounting adapter**

State: 2026-05-05 (Source: [rittal.com/ca-en](https://www.rittal.com/ca-en))

ENCLOSURES

POWER DISTRIBUTION

CLIMATE CONTROL

IT INFRASTRUCTURE

SOFTWARE & SERVICES

FRIEDHELM LOH GROUP



# SZ 7993.146 - Main switch mounting adapter For door mounting

Master switch adapter for installation in the Rittal enclosure systems VX25, TS 8, and VX SE. The master switch adapter allows a master switch handle to be mounted fixed and set back in an enclosure door.

## Features

Model No.	SZ 7993.146
Product description	Master switch adapter for installation in the Rittal enclosure systems VX25, TS 8, and VX SE. The master switch adapter allows a master switch handle to be mounted fixed and set back in an enclosure door.
Material	Carbon steel, 1.5 mm
Surface finish	Powder-coated, textured paint
Color	RAL 7035
Supply includes	Switch bracket Sealing Frame Cellular polyethylene
Suitable for door width	500 mm
Installation options	The switch bracket for holding the rotary drive is mounted directly in front of the door on one or two punched sections with mounting flanges
Mounting tip	The hole for feeding through the rotary drive can be added individually. For the back of the sealing frame, an adhesive seal made of cellular polyethylene is enclosed loose. This is pressed onto the mounting plate when the door is closed.
Dimensions	Width: 310 mm Height: 450 mm Depth: 90 mm
Suitable for enclosure type	VX VX SE TS

# Features

---

Protection category IP to IEC 60529	IP 55
Packaging unit	1 pc(s).
Net weight	5.72 kg
Gross weight	6.72 kg
Customs tariff number	73269098
ETIM 9	EC000327
ECLASS 8.0	27409217
Product description	SZ main switch installation adapter for door width 500 mm