

Rittal – The System.

Faster – better – everywhere.



PB 8017.685

Pushbutton boxes PB

State: 2026-05-22 (Source: rittal.com/ca-en)

ENCLOSURES

POWER DISTRIBUTION

CLIMATE CONTROL

IT INFRASTRUCTURE

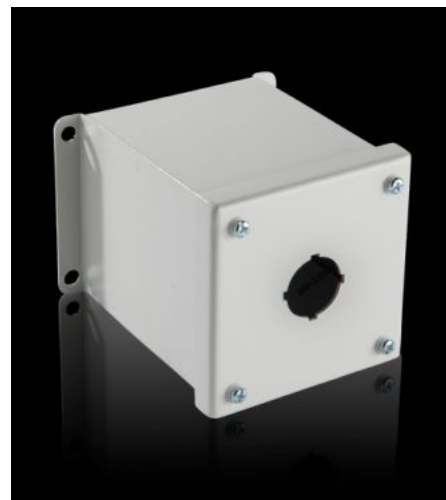
SOFTWARE & SERVICES

FRIEDHELM LOH GROUP



PB 8017.685 - Pushbutton boxes PB extra deep

The NEMA rated PB series pushbutton box enclosure is designed for indoor and outdoor use to house pushbuttons, selector switches, and pilot lights. This enclosure protects equipment from dirt, dust, sprayed water, oil, and coolants.



Features

Model No.	PB 8017.685
Material	Carbon steel
Surface finish	Housing and cover: Dipcoat primed, powder-coated on the outside, textured paint
Color	RAL 7035
Supply includes	Wall mounting bracket Mounting panel: Zinc-plated Cover screws, captive
Hole diameter	30.5 mm
Number of holes	1
Number of columns	1
Number of rows	1
Dimensions	Width: 101 mm Height: 101 mm Depth: 120 mm

Features

Protection category NEMA	NEMA 12 NEMA 13 NEMA 4
Packaging unit	1 pc(s).
Net weight	3 lb
Gross weight	3.086 lb
Customs tariff number	8538100000
Product description	PB pushbutton box, extra deep, 1-hole, 30.5 mm hole diameter, 3.98" H x 3.98" W x 4.72" D, Carbon Steel, Light Gray
