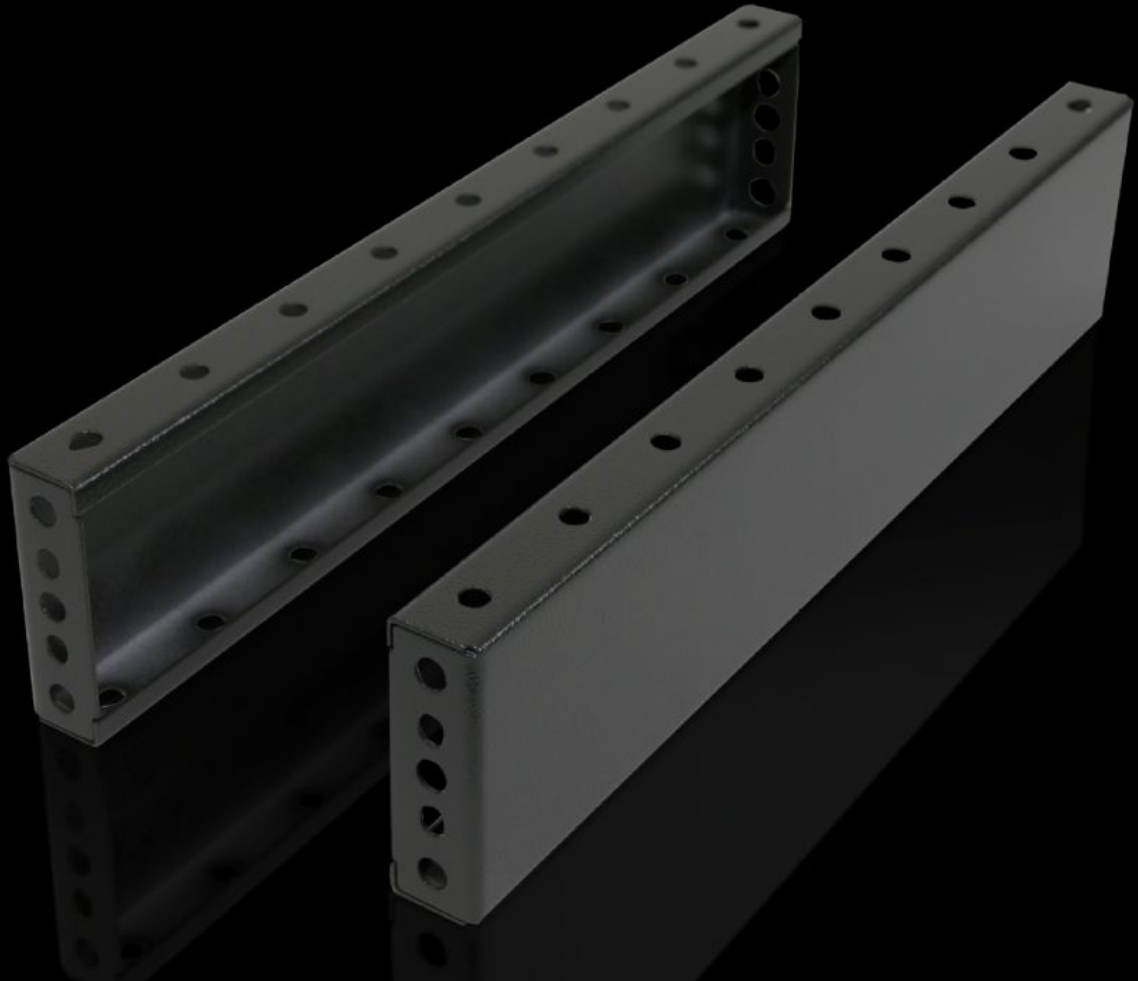


**Rittal – The System.**

Faster – better – everywhere.



**TS 8601.060**

**Base/plinth trim panels, side, 100 mm**

State: 2026-05-13 (Source: [rittal.com/ca-en](https://www.rittal.com/ca-en))

ENCLOSURES

POWER DISTRIBUTION

CLIMATE CONTROL

IT INFRASTRUCTURE

SOFTWARE & SERVICES

FRIEDHELM LOH GROUP



# TS 8601.060 - Base/plinth trim panels, side, 100 mm for base/plinth components, front and rear

To mount between the base/plinth components. For height 200 mm two 100 mm base/plinth trim panels can be used. Base/Plinth panels can be installed turned at 90° to provide stabilization for bayed base/plinth components.

## Features

Model No.	TS 8601.060
Product description	To mount between the base/plinth components. For height 200 mm, two 100 mm base/plinth trim panels can be used.
Material	Carbon steel
Surface finish	Spray-finished
Color	RAL 7022
Supply includes	2 plinth/base trim panels Assembly components
Mounting tip	100 mm side trim panels can be installed rotated through 90° to provide stabilization for bayed base/plinth components. Base/plinth baying brackets are required here
Dimensions	Height: 100 mm
Suitable for	Enclosure type: TS: = 600 mm Enclosure type: SE Enclosure type: CM Enclosure type: TP Enclosure type: PC Enclosure type: IW Enclosure type: TS IT
Packaging unit	2 pc(s).
Net weight	1.798 kg
Gross weight	1.997 kg
Customs tariff number	94039910

# Features

---

ECLASS 8.0

27182003

---

Product description

TS Trim panel, sides, H: 100 mm, for W: 600 mm, RAL 7022, sheet steel