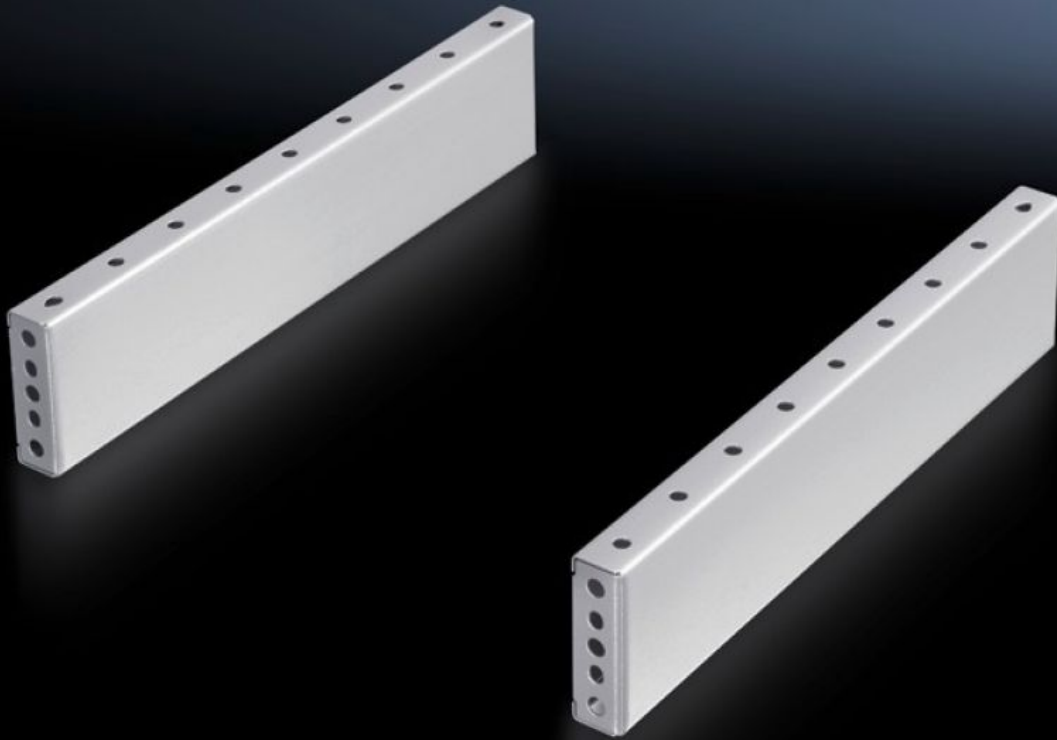


Rittal – The System.

Faster – better – everywhere.



TS 8601.085

Base/plinth trim panels, side, 100 mm

State: 2026-06-21 (Source: rittal.com/ca-en)

ENCLOSURES

POWER DISTRIBUTION

CLIMATE CONTROL

IT INFRASTRUCTURE

SOFTWARE & SERVICES

FRIEDHELM LOH GROUP



TS 8601.085 - Base/plinth trim panels, side, 100 mm for base/plinth components, front and rear

To mount between the base/plinth components. For height 200 mm two 100 mm base/plinth trim panels can be used. Base/Plinth panels can be installed turned at 90° to provide stabilization for bayed base/plinth components.

Features

Model No.	TS 8601.085
Product description	To mount between the base/plinth components. For height 200 mm, two 100 mm base/plinth trim panels can be used.
Material	Carbon steel
Surface finish	Spray-finished
Color	RAL 7035
Supply includes	2 plinth/base trim panels Assembly components
Mounting tip	100 mm side trim panels can be installed rotated through 90° to provide stabilization for bayed base/plinth components. Base/plinth baying brackets are required here
Dimensions	Height: 100 mm
Suitable for	Enclosure type: TS: = 800 mm Enclosure type: SE Enclosure type: CM Enclosure type: TP Enclosure type: PC Enclosure type: IW Enclosure type: TS IT
Packaging unit	2 pc(s).
Net weight	2.8 kg
Gross weight	3.46 kg
Customs tariff number	94039910

Features

ECLASS 8.0

27182003

Product description

TS Trim panel, sides, H: 100 mm, for W: 800 mm, RAL 7035, sheet steel