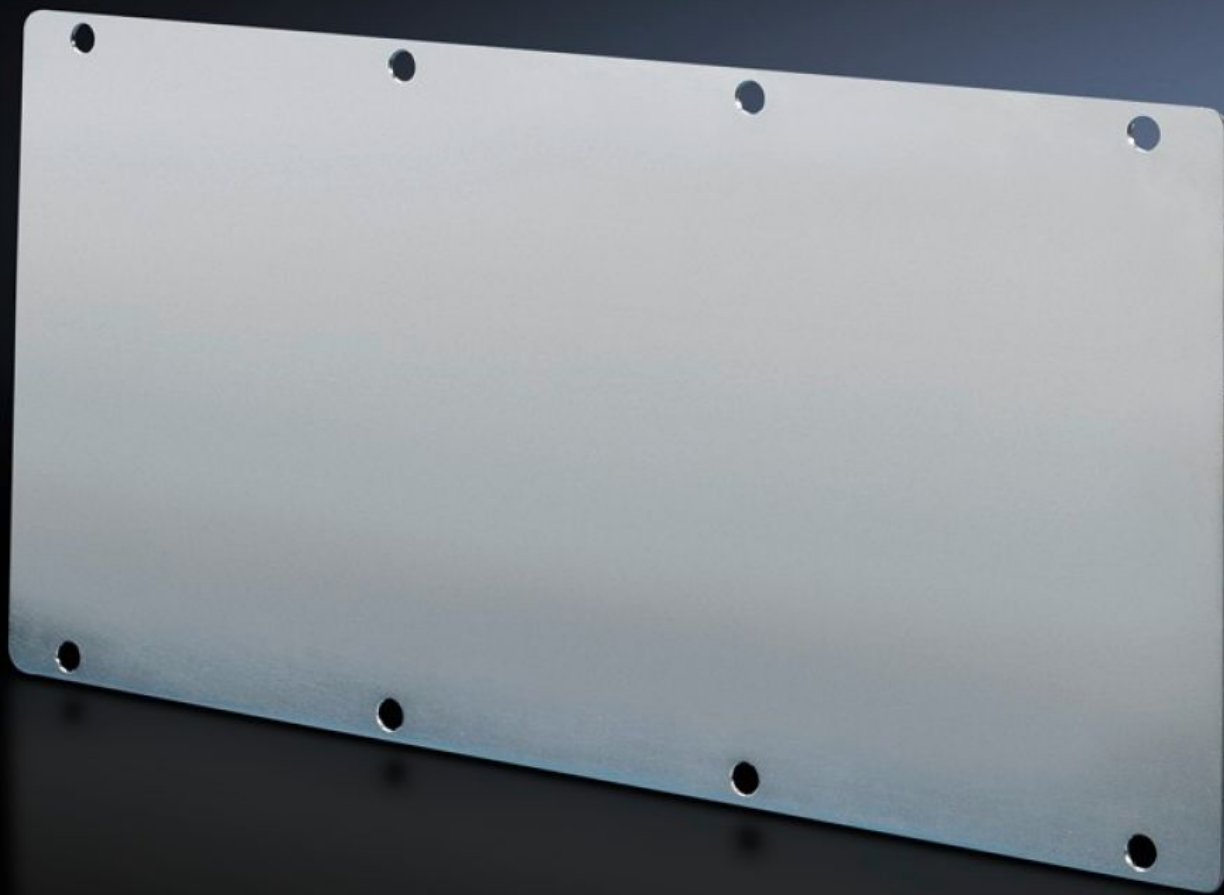


Rittal – The System.

Faster – better – everywhere.



TS 8609.160 Module Plates

State: 2025-08-18 (Source: [rittal.com/ca-en](https://www.rittal.com/ca-en))

ENCLOSURES

POWER DISTRIBUTION

CLIMATE CONTROL

IT INFRASTRUCTURE

SOFTWARE & SERVICES

FRIEDHELM LOH GROUP



TS 8609.160 - Module Plates Solid

For sealing unused cut-outs. Can be easily machined for individual cut-outs.

Features

| | |
|-------------------------------------|--|
| Model No. | TS 8609.160 |
| Version | Solid |
| Product description | For blanking unused cut-outs. Easily machined for individual cut-outs. |
| Material | Carbon steel, 2.0 mm |
| Surface finish | Zinc-plated |
| Supply includes | Seal |
| Suitable for | Enclosure type: VX TS |
| Packaging unit | 1 pc(s). |
| Net weight | 0.88 |
| Gross weight | 0.936 |
| PCF/VE (cradle-to-gate) | 3.7 kg CO2 eq (Cat B) |
| Information regarding the PCF class | Category B: PCF value (cradle-to-gate) calculated approximately on the basis of the product weight and self-declared |
| Customs tariff number | 73269098 |
| EAN | 4028177211780 |
| ETIM 9 | EC000211 |
| ECLASS 8.0 | 27142421 |