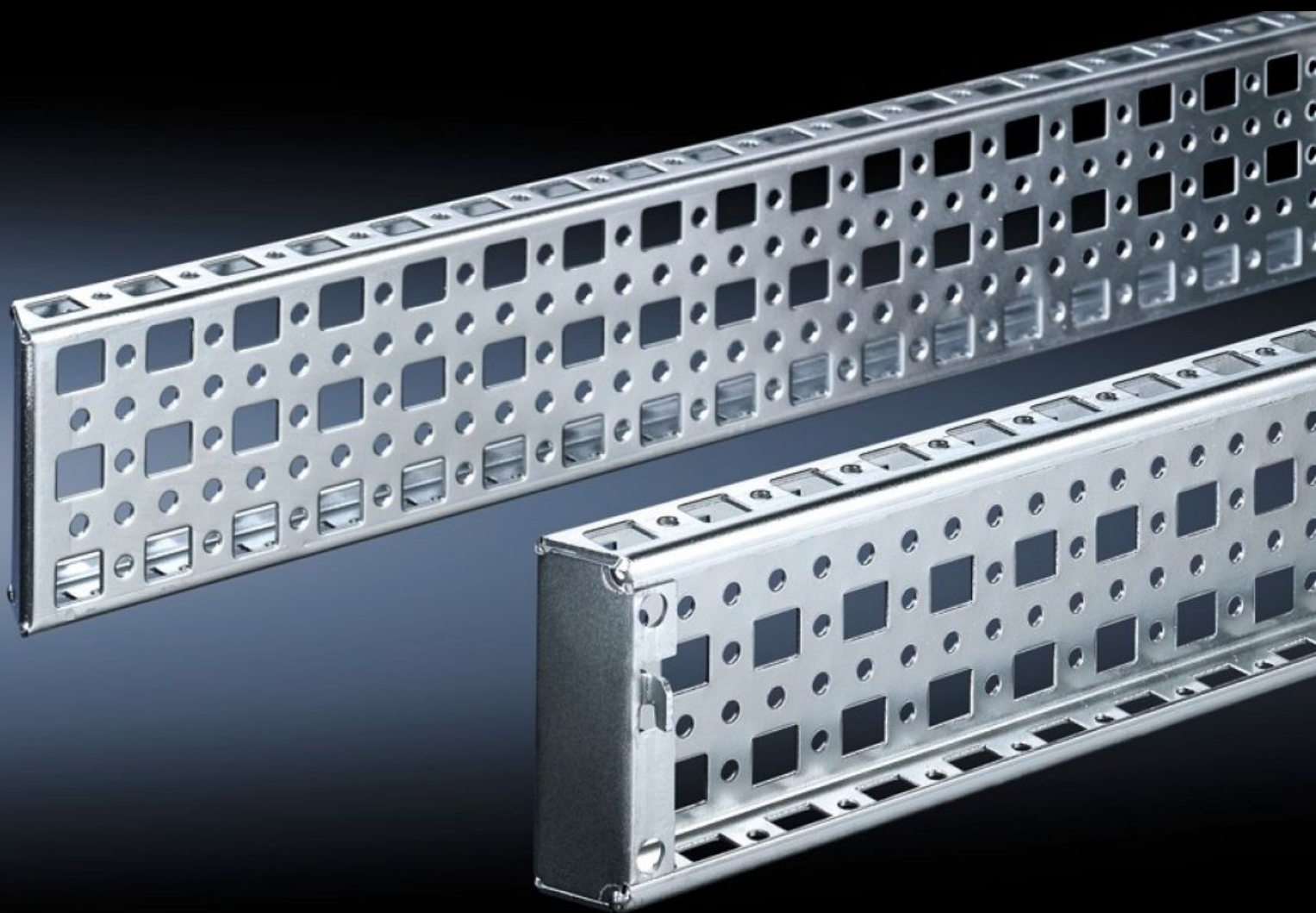


# Rittal – The System.

Faster – better – everywhere.



## TS 8612.560

## TS System Chassis 23 x 73 mm

State: 2025-09-06 (Source: [rittal.com/ca-en](https://www.rittal.com/ca-en))

ENCLOSURES

POWER DISTRIBUTION

CLIMATE CONTROL

IT INFRASTRUCTURE

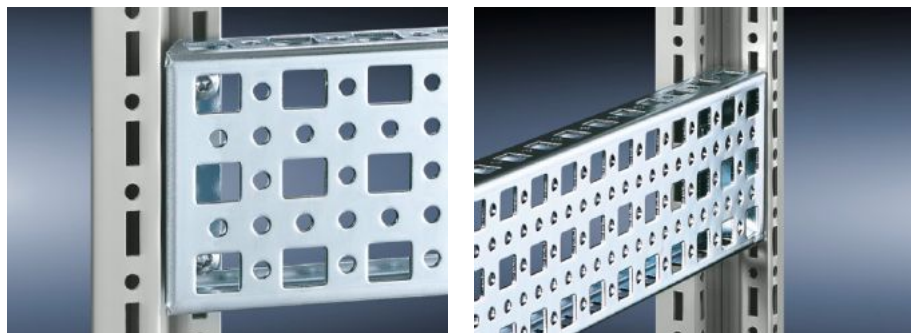
SOFTWARE & SERVICES

FRIEDHELM LOH GROUP



# TS 8612.560 - TS System Chassis 23 x 73 mm

The alternative to the TS 17 x 73 mm system chassis, with punchings for captive nuts/speed nuts instead of slotted holes top and bottom. Simply locate and secure.



## Features

|                       |  |
|-----------------------|--|
| Model No.             | TS 8612.560  |
| Product description   | The alternative to the TS 17 x 73 mm system chassis, with punchings for captive nuts/speed nuts instead of slotted holes top and bottom. Simply locate and secure. |
| Material              | Carbon steel   |
| Surface finish        | Zinc-plated  |
| Supply includes       | Assembly screws  |
| Installation options  | On the vertical TS, VX SE enclosure section  |
| Suitable for          | Enclosure type: the inner mounting level<br>Suitable for width/depth: 600 mm   |
| Packaging unit        | 4 pc(s).   |
| Net weight            | 2.544  |
| Gross weight          | 2.74   |
| Customs tariff number | 73269098   |
| EAN                   | 4028177237391  |
| ETIM 9                | EC002625   |
| ECLASS 8.0            | 27189234   |