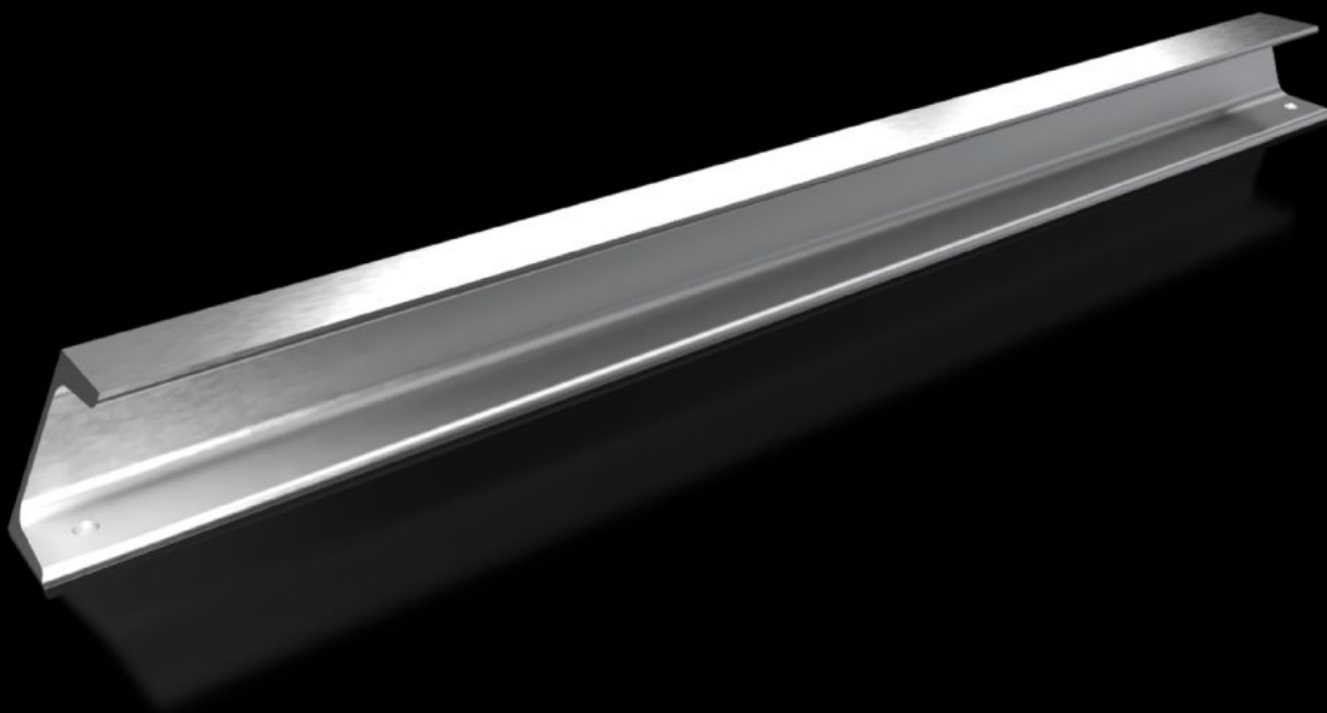
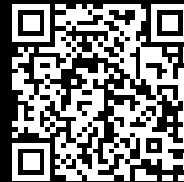


# Rittal – The System.

Faster – better – everywhere.



## TS 8612.980

## Support Rail 65 x 42 mm

State: 2025-07-15 (Source: [rittal.com/ca-en](https://www.rittal.com/ca-en))

ENCLOSURES

POWER DISTRIBUTION

CLIMATE CONTROL

IT INFRASTRUCTURE

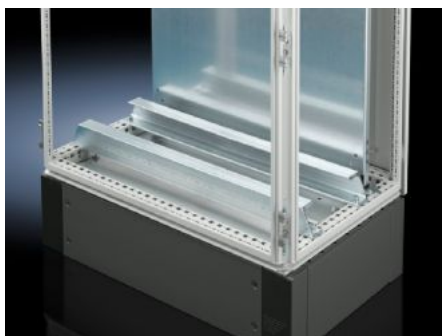
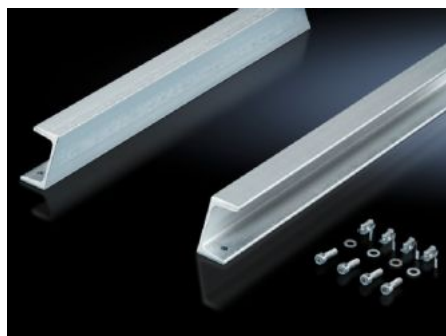
SOFTWARE & SERVICES

FRIEDHELM LOH GROUP



# TS 8612.980 - Support Rail 65 x 42 mm for VX, TS, VX SE

For heavy equipment such as base isolators or transformers.



## Features

Model No.	TS 8612.980
Product description	For heavy equipment such as base isolators or transformers.
Material	Steel
Surface finish	Zinc-plated
Supply includes	Assembly components
Installation options	On the inner mounting level, on VX enclosure profile In VX SE on the inner mounting level on the enclosure section in conjunction with adapter rail VX
Suitable for	Enclosure type: VX TS VX SE Width: = 800 mm
Packaging unit	2 pc(s).
Net weight	9.912
Gross weight	10.85
PCF/VE (cradle-to-gate)	39.8 kg CO2 eq (Cat B)
Information regarding the PCF class	Category B: PCF value (cradle-to-gate) calculated approximately on the basis of the product weight and self-declared
Customs tariff number	73269098
EAN	4028177522886

# Features

ETIM 9	EC001285
ECLASS 8.0	27189234