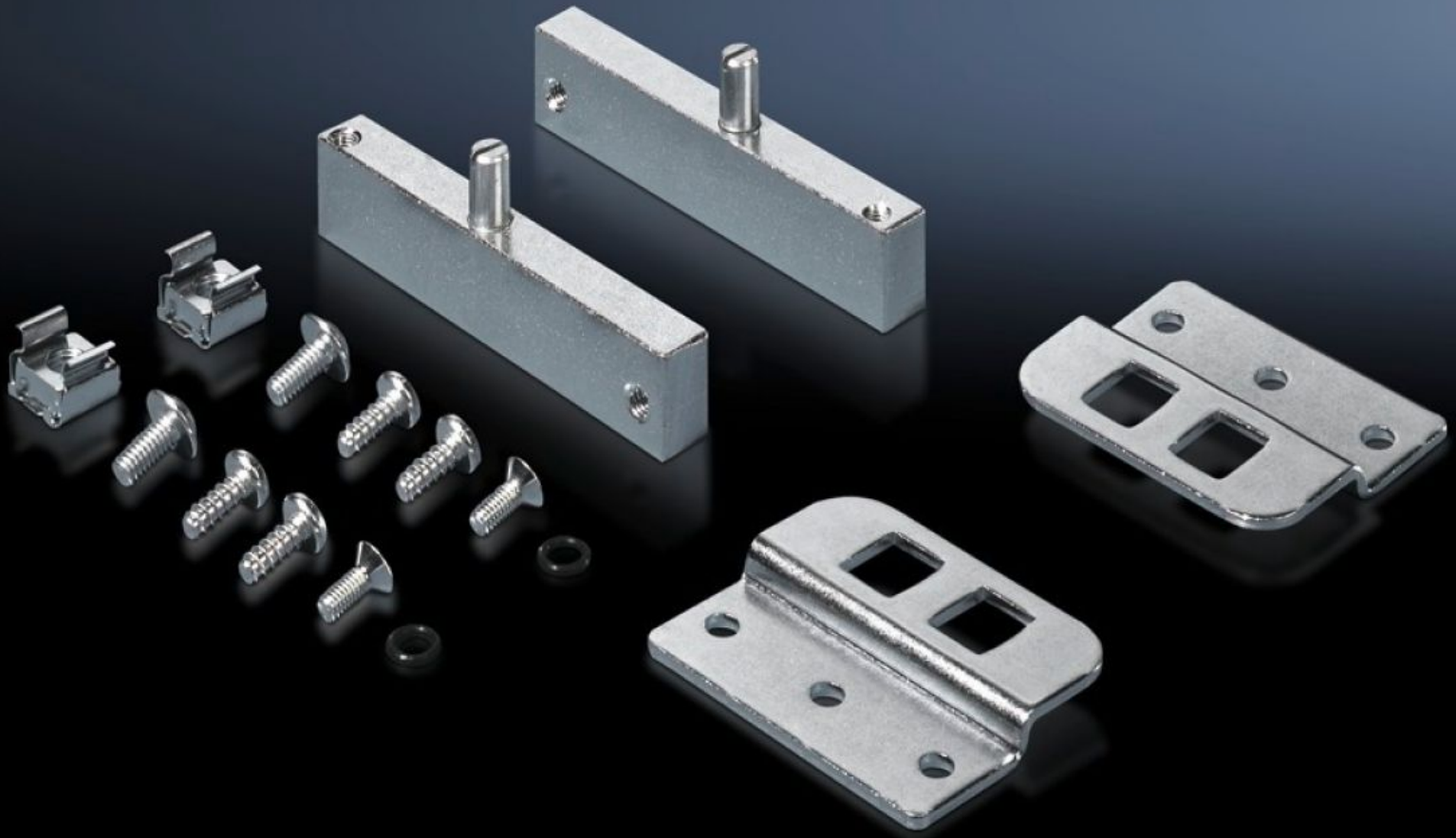


Rittal – The System.

Faster – better – everywhere.



TS 8614.100 Hinge attachment

State: 2026-06-10 (Source: rittal.com/ca-en)

ENCLOSURES

POWER DISTRIBUTION

CLIMATE CONTROL

IT INFRASTRUCTURE

SOFTWARE & SERVICES

FRIEDHELM LOH GROUP



TS 8614.100 - Hinge attachment for partial mounting plate TS, VX SE

To swivel mount partial mounting plates.



Features

Model No.	TS 8614.100
Product description	For the fitting of partial mounting plates to installation kits for pivoting frames, small.
Material	Steel
Surface finish	Zinc-plated
Supply includes	Assembly components
Mounting tip	In conjunction with hinge, for side panel, the side installation is identical with the parallel-to-front position with an enclosure depth of 600 or 800 mm
Packaging unit	1 pc(s).
Net weight	0.44 kg
Gross weight	0.534 kg
Customs tariff number	83024900
ETIM 9	EC001167
ECLASS 8.0	27409219
Product description	TS Hinge attachment, for partial mounting plate TS, SE