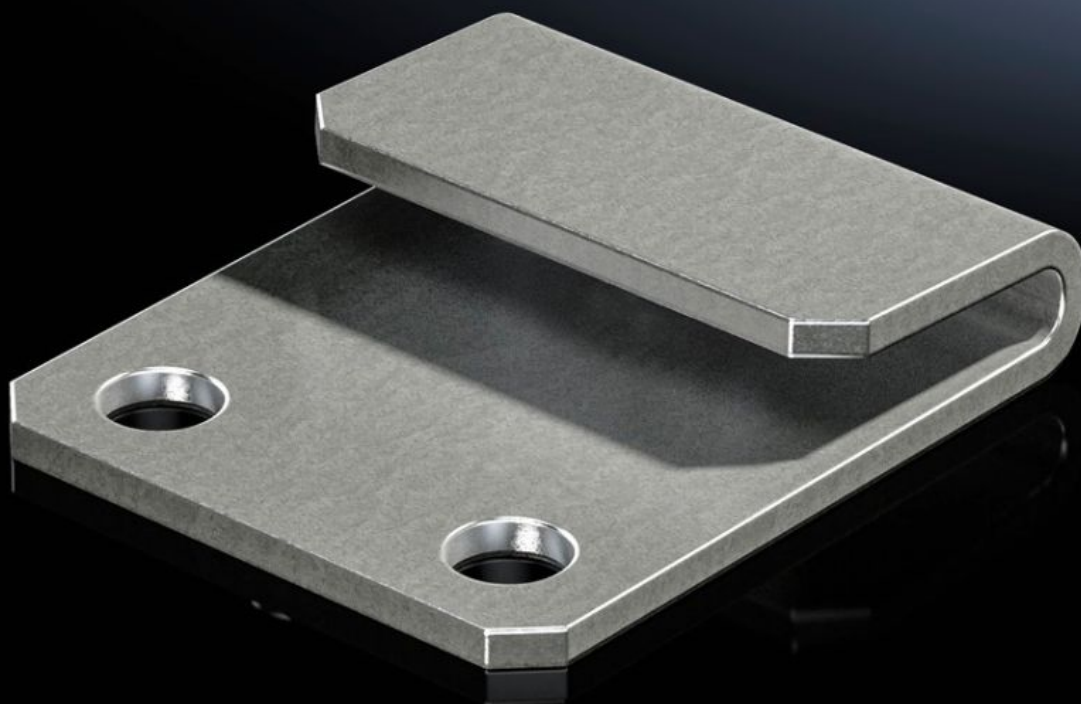
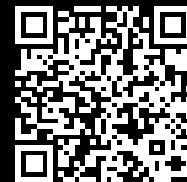


**Rittal – The System.**

Faster – better – everywhere.



**VX 8617.352**

**Mounting plate attachment**

State: 2026-02-09 (Source: [rittal.com/ca-en](https://www.rittal.com/ca-en))

ENCLOSURES

POWER DISTRIBUTION

CLIMATE CONTROL

IT INFRASTRUCTURE

SOFTWARE & SERVICES

FRIEDHELM LOH GROUP



# VX 8617.352 - Mounting plate attachment Type C, for VX

For additional clamping and to reduce potential vibration of the mounting plate.



## Features

Model No.	VX 8617.352
Product description	For additional clamping and to reduce potential vibration of the mounting plate.
Benefits	Easy mounting directly on the enclosure frame
Function principle	<p>The mounting plate can be inserted and then interlocked and clamped using the mounting plate fixture.</p> <p>Keeps the front of the mounting plate completely free for unrestricted use</p> <p>Can be mounted from the rear with built-in mounting plate and dismantled rear wall</p>
Material	Carbon steel
Surface finish	Zinc plated, clear-chromated
Supply includes	Assembly components
Packaging unit	10 pc(s).
Net weight	0.5
Gross weight	0.52
PCF/VE (cradle-to-gate)	2.3 kg CO2 eq (Cat B)
Information regarding the PCF class	Category B: PCF value (cradle-to-gate) calculated approximately on the basis of the product weight and self-declared
Customs tariff number	73269098

# Features

EAN	4028177927063
ETIM 9	EC002620
ECLASS 8.0	27189261