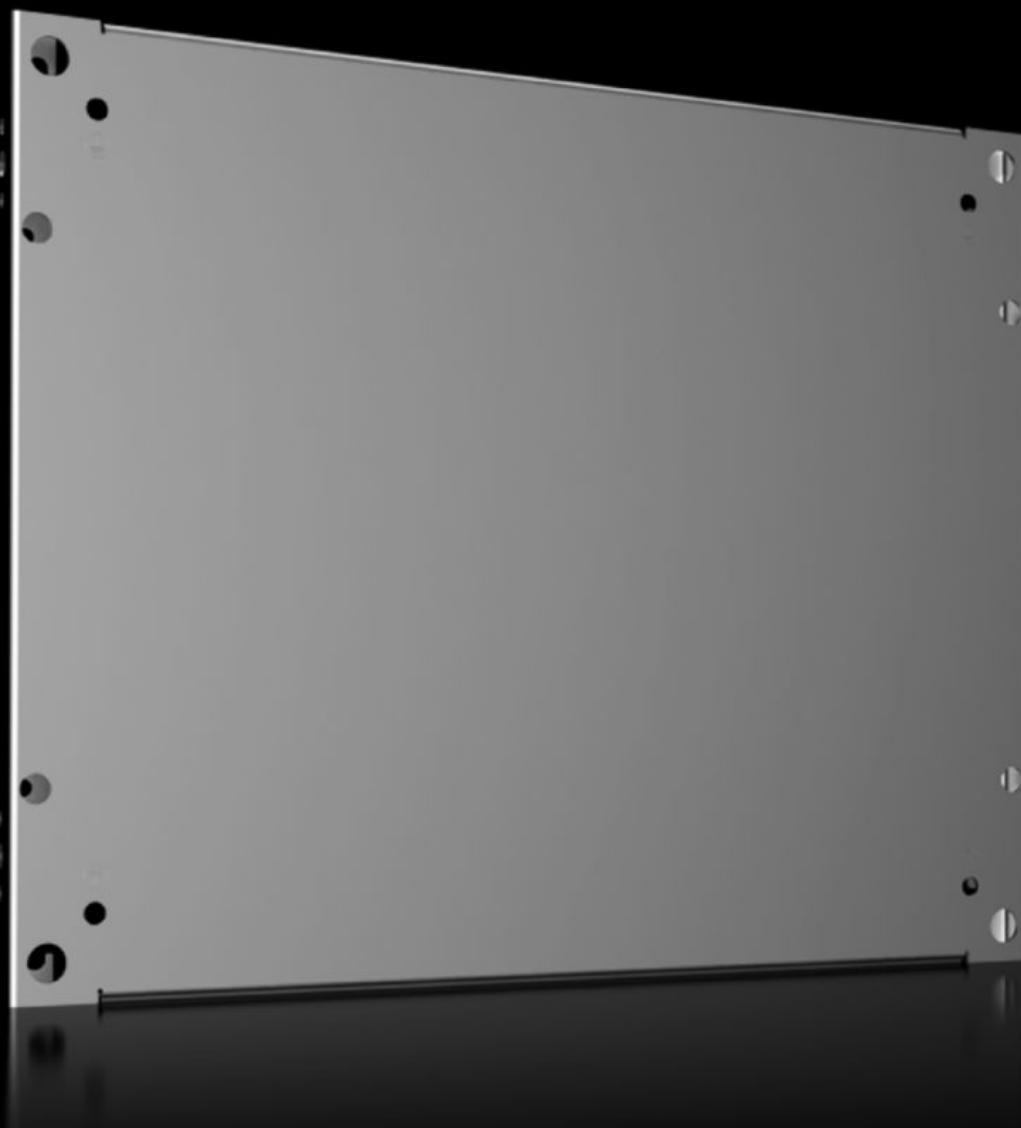


Rittal – The System.

Faster – better – everywhere.



VX 8617.520

Partial Mounting Plates

State: 2025-09-11 (Source: [rittal.com/ca-en](https://www.rittal.com/ca-en))

ENCLOSURES

POWER DISTRIBUTION

CLIMATE CONTROL

IT INFRASTRUCTURE

SOFTWARE & SERVICES

FRIEDHELM LOH GROUP



VX 8617.520 - Partial Mounting Plates for VX, VX SE, PC, IW

To accommodate additional components inside the enclosure. Partial mounting plates can be used extremely flexibly, providing a platform for a diverse range of applications.

Features

Model No.	VX 8617.520
Product description	To accommodate additional components inside the enclosure. Partial mounting plates can be used extremely flexibly, providing a platform for a diverse range of applications.
Material	Carbon steel, 2.5 mm
Surface finish	Zinc-plated
Supply includes	Assembly components
Suitable for door width	600 mm
Installation options	The installation can be done either standing up as a vertical mounting surface or lying flat as a horizontal floor Attachment is directly on the enclosure section It is attached via the system chassis at any mounting level in the enclosure in the case of an advanced design For multi-level installation of the partial mounting plates one behind the other, they can be made swingable through the hinge attachment for quick access to the levels behind them
Note	Adaptor rail VX is required for installation in VX SE, PC, IW
Dimensions	Width: 500 mm Depth: 400 mm
Suitable for	Enclosure type: VX VX SE PC Width: = 600 mm Depth: = 500 mm = 600 mm
Packaging unit	1 pc(s).

Features

Net weight	4.95
Gross weight	5.66
PCF/VE (cradle-to-gate)	21.6 kg CO2 eq (Cat B)
Information regarding the PCF class	Category B: PCF value (cradle-to-gate) calculated approximately on the basis of the product weight and self-declared
Customs tariff number	94039910
EAN	4028177919372
ETIM 9	EC000213
ECLASS 8.0	27409216