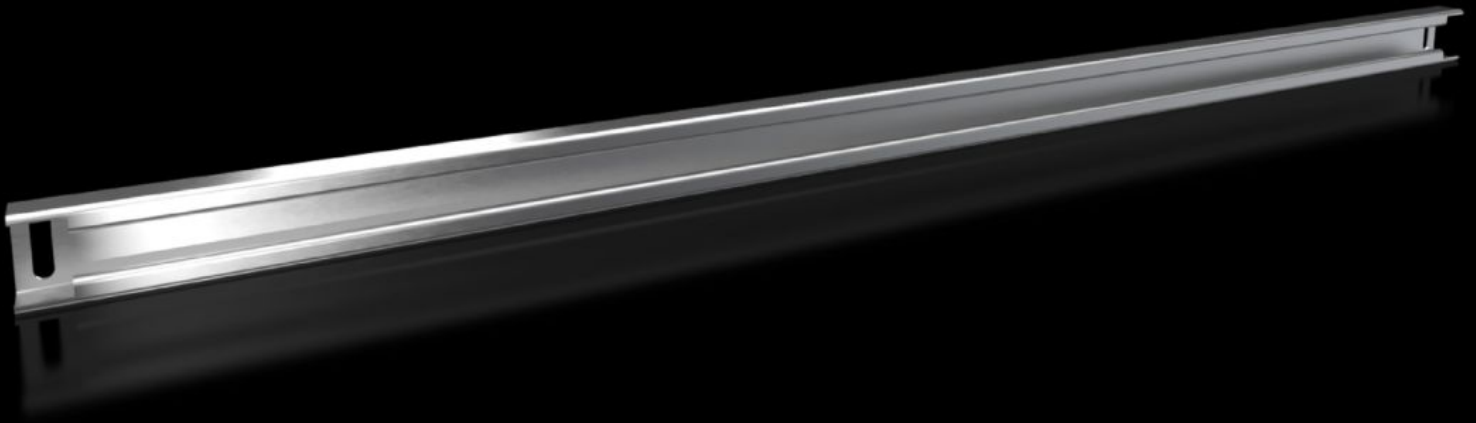


# Rittal – The System.

Faster – better – everywhere.



## VX 8617.830

## Support Rail 48 x 26 mm

State: 2025-11-17 (Source: [rittal.com/ca-en](https://www.rittal.com/ca-en))

ENCLOSURES

POWER DISTRIBUTION

CLIMATE CONTROL

IT INFRASTRUCTURE

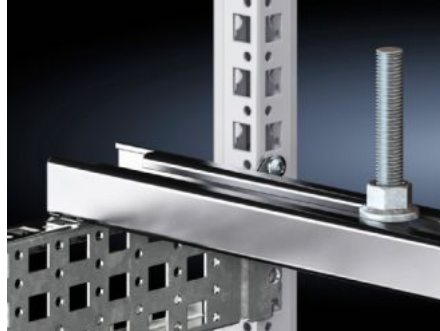
SOFTWARE & SERVICES

FRIEDHELM LOH GROUP



# VX 8617.830 - Support Rail 48 x 26 mm for VX, VX SE, PC, IW, AX

For heavy installed equipment such as transformers. The T-head screw and longitudinal slots in the support rail accommodate all mounting dimensions.



## Features

Model No.	VX 8617.830
Product description	
Material	Carbon steel
Surface finish	Zinc-plated
Supply includes	Assembly components
Installation options VX	In enclosure width 1200 mm, on the inner mounting level and in the base
Installation options VX SE	In enclosure width 1200 mm, on the inner mounting level, in conjunction with adaptor rail for VX compatibility and in the base
Installation options AX	In enclosure width 1200 mm, in conjunction with the AX interior installation rail and AX base configuration rail
Installation options PC	In enclosure width 1200 mm, on the inner mounting level, in conjunction with adaptor rail for VX compatibility and in the base
Installation options IW	In enclosure width 1200 mm, on the inner mounting level, in conjunction with adaptor rail for VX compatibility and in the base

# Features

---

Suitable for	Enclosure type: VX VX SE PC IW AX CX One-Piece Console CX Pedestal Width: = 1,200 mm
--------------	---

---

Packaging unit	2 pc(s).
----------------	----------

---

Net weight	5.6
------------	-----

---

Gross weight	5.95
--------------	------

---

Customs tariff number	73269098
-----------------------	----------

---

EAN	4028177919549
-----	---------------

---

ETIM 9	EC001285
--------	----------

---

ECLASS 8.0	27189261
------------	----------

---