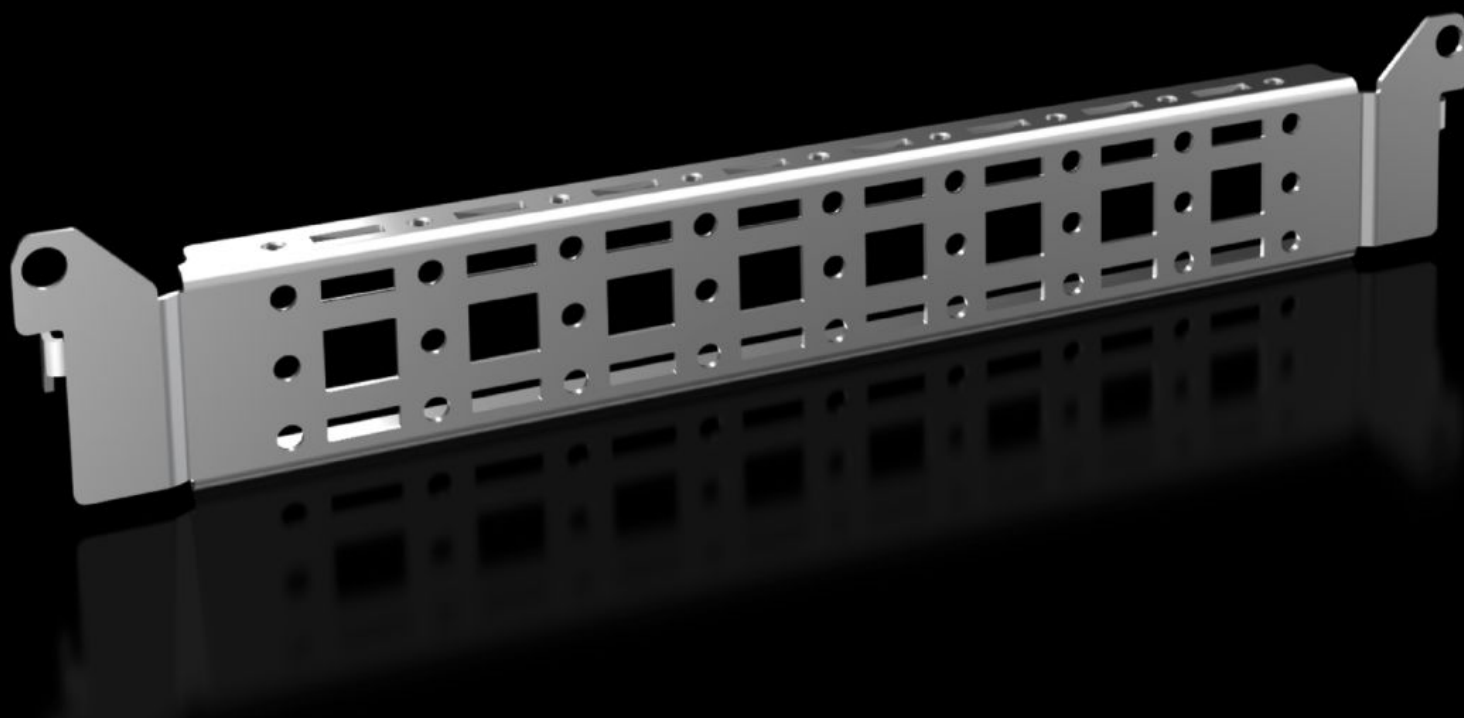


Rittal – The System.

Faster – better – everywhere.



VX 8619.700

System chassis 14 x 39 mm

State: 2026-01-18 (Source: [rittal.com/ca-en](https://www.rittal.com/ca-en))

ENCLOSURES

POWER DISTRIBUTION

CLIMATE CONTROL

IT INFRASTRUCTURE

SOFTWARE & SERVICES

FRIEDHELM LOH GROUP



VX 8619.700 - System chassis 14 x 39 mm for VX, VX SE, PC, IW, AX

For securing cable ducts, cable conduit holders, equipment installed on the door, etc.



Features

| | |
|---|---|
| Model No. | VX 8619.700 |
| Product description | For securing cable ducts, cable conduit holders, equipment installed on the door, etc. |
| Material | Carbon steel |
| Surface finish | Zinc-plated |
| Supply includes | Assembly components |
| Distance between fixing points | 275 mm |
| Suitable for door width | 400 mm |
| Installation options VX | In door width 400 mm |
| Installation options AX | In enclosure width 300 mm and in enclosure height 400 mm, in conjunction with rail for interior installation AX |
| Installation options AX stainless steel | In enclosure width + 300 mm |
| Installation options AX plastic | In door width 400 mm |
| Installation options for 3-part AX | Enclosure depth 473 mm |

Features

| | |
|-------------------------|---|
| Installation options CX | In pedestal in enclosure depth 400 mm In one-piece console lower part in enclosure depth 400 mm |
| Mounting tip | For installation in AX carbon steel, only in conjunction with rails interior installation AX |
| Note | Carbon steel screws or M5 self-tapping screws are required for extension with own components on the system chassis |
| Suitable for | Enclosure type: VX AX AX plastic AX wall-mounted housing, 3-part CX One-Piece Console CX Pedestal Suitable for width or height or depth: 400 mm |
| Packaging unit | 4 pc(s). |
| Net weight | 0.68 |
| Gross weight | 0.686 |
| Customs tariff number | 73269098 |
| EAN | 4028177924659 |
| E-Number Sweden | E3465280 |
| ETIM 9 | EC002620 |
| ECLASS 8.0 | 27189234 |