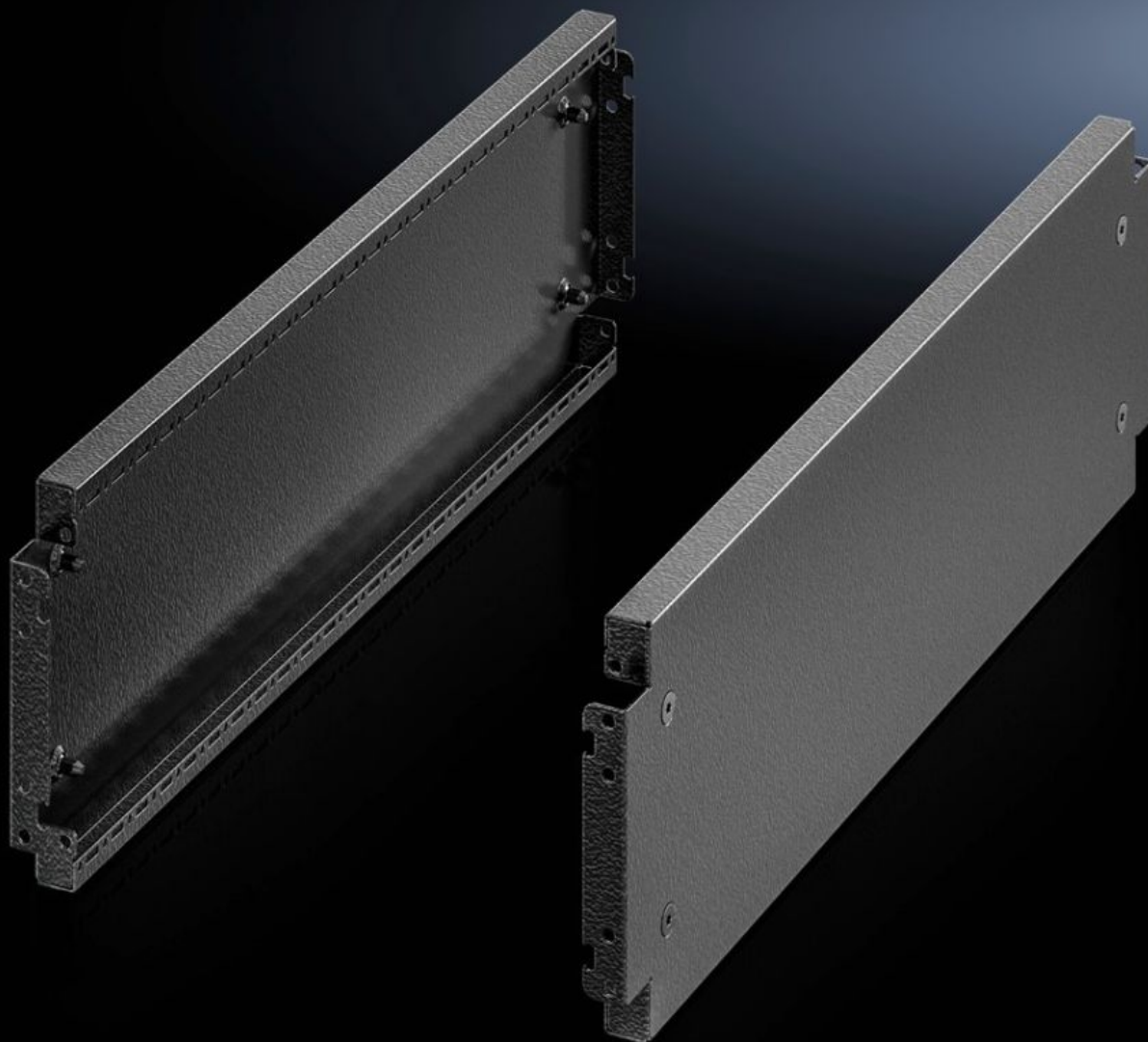


# Rittal – The System.

Faster – better – everywhere.



## VX 8640.042

## Base/plinth trim panels, side, 200 mm

State: 2025-09-12 (Source: [rittal.com/ca-en](https://www.rittal.com/ca-en))

ENCLOSURES

POWER DISTRIBUTION

CLIMATE CONTROL

IT INFRASTRUCTURE

SOFTWARE & SERVICES

FRIEDHELM LOH GROUP



# VX 8640.042 - Base/plinth trim panels, side, 200 mm for base/plinth system VX, carbon steel

For side blanking of a base/plinth unit and for additional stabilization or the interior installation of baying bases. One 200 mm-high or two 100 mm-high trim panels can optionally be fitted on 200 mm-high base/plinths.

## Features

Model No.	VX 8640.042
Product description	For side blanking of a base/plinth unit and additional stability, or the interior installation of bayed base/plinths. One 200 mm high or two 100 mm high trim panels can optionally be fitted on 200 mm high base/plinths.
Material	Carbon steel
Color	RAL 9005
Supply includes	Assembly components
Dimensions	Height: 200 mm
Suitable for	Depth: = 500 mm
Type rating according to UL 50E	Type 1 Type 12
Weight/packaging unit	2.32 kg
Packaging unit	2 pc(s).
Net weight	2.32
Gross weight	2.32
Customs tariff number	94039910
EAN	4028177959033
E-Number Sweden	E3465385
ETIM 9	EC000721
ECLASS 8.0	27182003

# Approvals

---

Approvals

UL + C-UL - FTTA