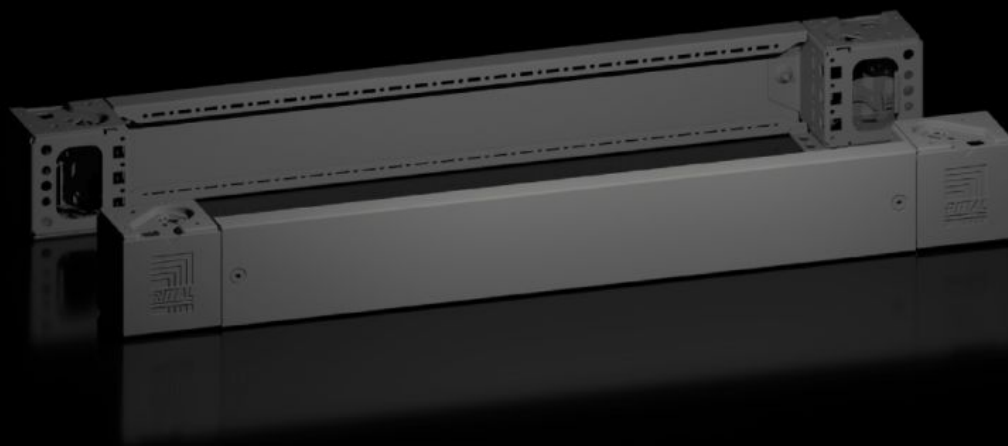
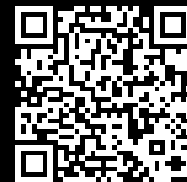


Rittal – The System.

Faster – better – everywhere.



VX 8660.004

Base/plinth corner pieces with base/plinth trim panels, front and rear

State: 2025-12-14 (Source: [rittal.com/ca-en](https://www.rittal.com/ca-en))

ENCLOSURES

POWER DISTRIBUTION

CLIMATE CONTROL

IT INFRASTRUCTURE

SOFTWARE & SERVICES

FRIEDHELM LOH GROUP



VX 8660.004 - Base/plinth corner pieces with base/plinth trim panels, front and rear for base/plinth system VX, carbon steel

Base/plinth corner pieces with trim panels for flexible cable entry.



Features

Model No.	VX 8660.004
Benefits	Reliable - very high stability of the base Flexible – numerous interior expansion options with the VX accessories Simple – flush finish between the baying points
Material	Base/plinth corner piece: Carbon steel Base/plinth trim panels, front/rear: Carbon steel Corner and baying covers: Plastic
Color	RAL 9005
Supply includes	4 x corner covers Assembly components 4 x base/plinth corner pieces, 100 mm high 2 x base/plinth trim panels, front/rear, 100 mm high
Note	Base/plinth trim panels, on the side for closing off a base/plinth unit, for additional stabilization of the bases/plinths to one another, or for interior installation of the bases/plinths
Dimensions	Height: 100 mm

Features

Suitable for	Enclosure type: VX VX IT VX SE TX CableNet TS TS IT TP PC IW CX Width: = 850 mm
Type rating according to UL 50E	Type 1 Type 12
Weight/packaging unit	5.55 kg
Packaging unit	2 pc(s).
Net weight	5.36
Gross weight	5.551
PCF/VE (cradle-to-gate)	21.1 kg CO2 eq (Cat B)
Information regarding the PCF class	Category B: PCF value (cradle-to-gate) calculated approximately on the basis of the product weight and self-declared
Customs tariff number	94039910
EAN	4028177978065
ETIM 9	EC000721
ETIM 8	EC000721
ECLASS 8.0	27182003

Approvals

Approvals	UL + C-UL - FTTA
Explanations	PCF-declaration