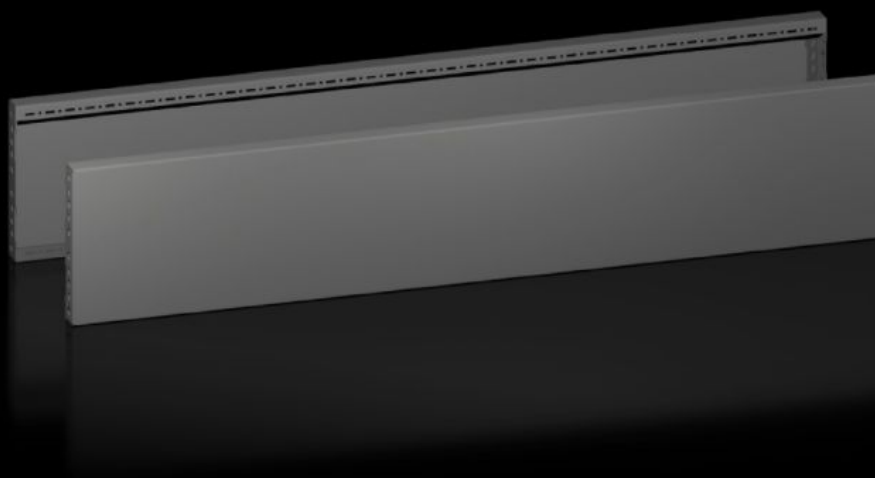
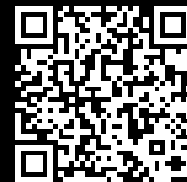


# Rittal – The System.

Faster – better – everywhere.



## VX 8660.046

## Base/Plinth Trim Panels, Side

State: 2025-09-04 (Source: [rittal.com/ca-en](https://rittal.com/ca-en))

ENCLOSURES

POWER DISTRIBUTION

CLIMATE CONTROL

IT INFRASTRUCTURE

SOFTWARE & SERVICES

FRIEDHELM LOH GROUP



# VX 8660.046 - Base/Plinth Trim Panels, Side for base/ plinth system VX, carbon steel

For side blanking of a base/plinth unit and for additional stabilization or the interior installation of baying bases. One 200 mm-high or two 100 mm-high trim panels can optionally be fitted on 200 mm-high base/plinths.



## Features

Model No.	VX 8660.046
Version	Closed
Material	Carbon steel
Color	RAL 9005
Supply includes	Assembly components
Dimensions	Height: 200 mm
Suitable for	Enclosure type: VX VX IT VX SE TX CableNet TS TS IT TP PC IW CX Depth: = 1,200 mm

# Features

Type rating according to UL 50E	Type 1 Type 12
Weight/packaging unit	7.12 kg
Packaging unit	2 pc(s).
Suitable for	for base/plinth system VX, carbon steel
Net weight	7.12
Gross weight	7.124
PCF/VE (cradle-to-gate)	27.1 kg CO2 eq (Cat B)
Information regarding the PCF class	Category B: PCF value (cradle-to-gate) calculated approximately on the basis of the product weight and self-declared
Customs tariff number	94039910
EAN	4028177978348
ETIM 9	EC000721
ETIM 8	EC000721
ECLASS 8.0	27182003