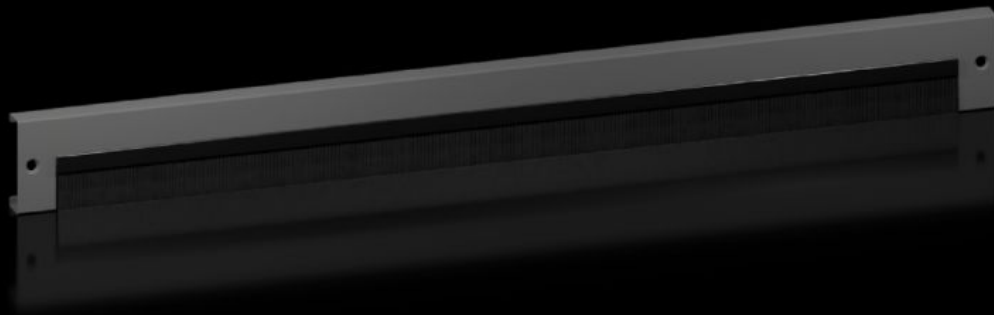


# Rittal – The System.

Faster – better – everywhere.



## VX 8660.095

# Base/Plinth Trim Panels with Brush Strip

State: 2026-03-29 (Source: [rittal.com/ca-en](https://www.rittal.com/ca-en))

ENCLOSURES

POWER DISTRIBUTION

CLIMATE CONTROL

IT INFRASTRUCTURE

SOFTWARE & SERVICES

FRIEDHELM LOH GROUP



# VX 8660.095 - Base/Plinth Trim Panels with Brush Strip for base/plinth system VX, carbon steel

For cable entry into the base/plinth. With a 200 mm base/plinth height, one or two trim panels with brush strips may optionally be used. With the optional panel attachment, the trim panels with brush strips can also be mounted on the side of the base corner piece.

## Features

|                       |   |
|-----------------------|---|
| Model No.             | VX 8660.095   |
| Version               | With brush strip  |
| Material              | Base/plinth trims: Carbon steel<br>Brush strip: Plastic, self-extinguishing   |
| Color                 | RAL 9005  |
| Dimensions            | Height: 100 mm  |
| Suitable for          | Enclosure type: VX<br>VX IT<br>VX SE<br>TX CableNet<br>TS<br>TS IT<br>TP<br>PC<br>IW<br>CX<br>Width/depth: 1,200 mm |
| Packaging unit        | 2 pc(s).  |
| Suitable for          | for base/plinth system VX, carbon steel   |
| Mounting tip          | The optional front panel fixing is required for installation in the depth.  |
| Net weight            | 2.5 kg  |
| Gross weight          | 2.554 kg  |
| Customs tariff number | 94039910  |

# Features

---

|                     |   |
|---------------------|---|
| ETIM 9              | EC000721  |
| ETIM 8              | EC000721  |
| ECLASS 8.0          | 27182003  |
| Product description | VX base trim panel with brush strip, for width/depth: 1200 mm |

---