

# Rittal – The System.

Faster – better – everywhere.



## VX 8660.110

### Transport castors

State: 2025-12-18 (Source: [rittal.com/ca-en](https://rittal.com/ca-en))

ENCLOSURES

POWER DISTRIBUTION

CLIMATE CONTROL

IT INFRASTRUCTURE

SOFTWARE & SERVICES

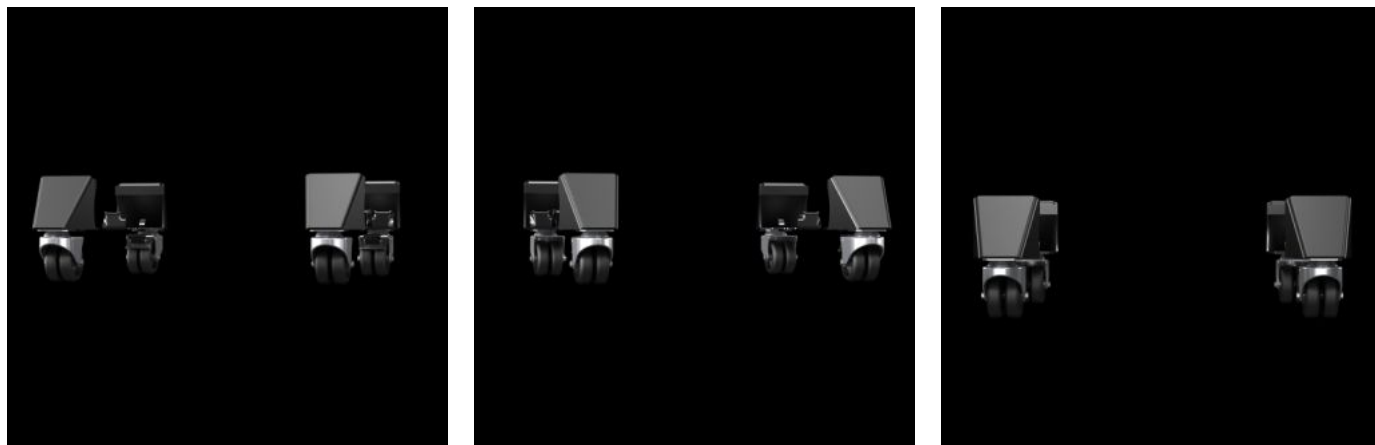
FRIEDHELM LOH GROUP



# VX 8660.110 - Transport castors for base/plinth system

## VX, carbon steel

For fitting on the base/plinth corner piece, height 100 or 200 mm.



## Features

Model No.	VX 8660.110
Color	RAL 9005
Supply includes	4 twin castors, 2 x with, 2 x without locks.
Clearance floor	100 mm
Load capacity	Max. dynamic load when using 4 double castors (single enclosure): 3000 N
Weight/packaging unit	8.63 kg
Packaging unit	1 pc(s).
Net weight	8.4
Gross weight	8.631
Customs tariff number	83024900
EAN	4028177984837
ETIM 9	EC002621
ETIM 8	EC000721
ECLASS 8.0	27182003