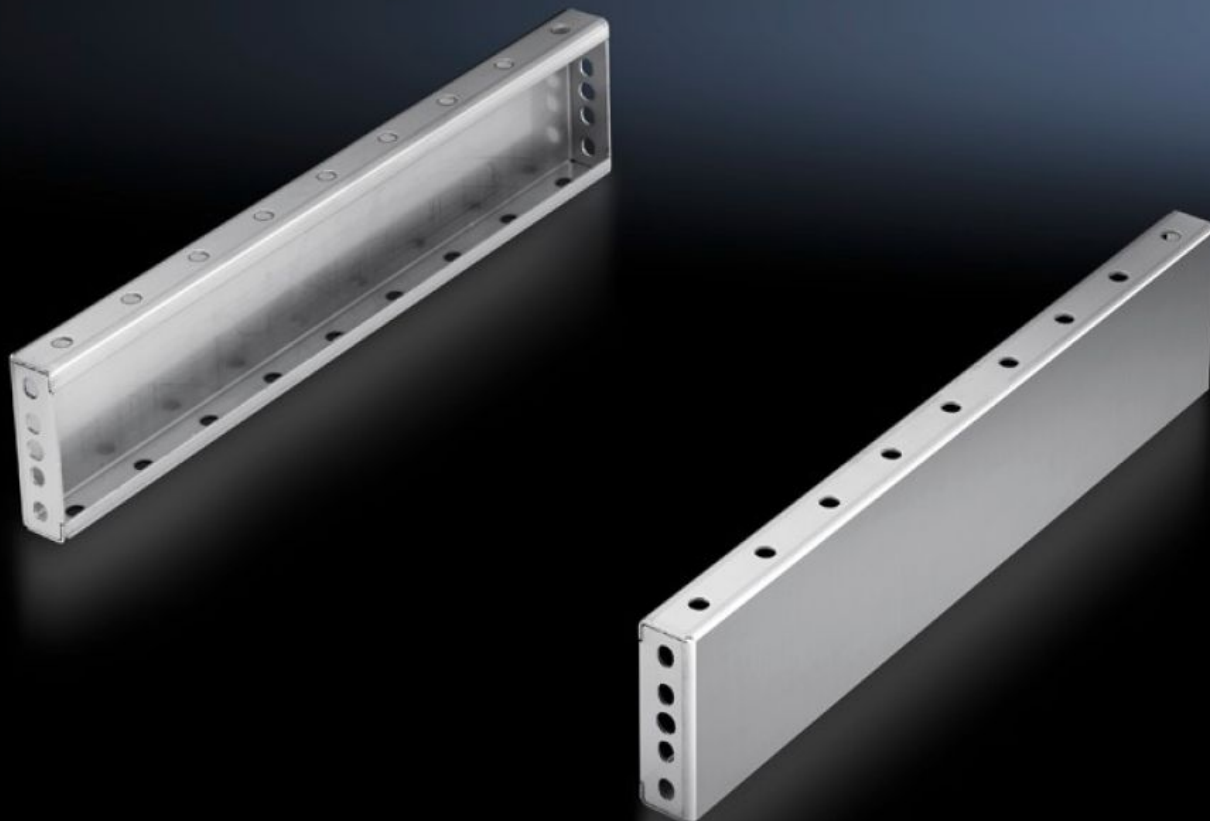
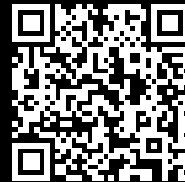


Rittal – The System.

Faster – better – everywhere.



TS 8701.040

Base/plinth trim panels, side, 100 mm

State: 2025-08-24 (Source: [rittal.com/ca-en](https://www.rittal.com/ca-en))

ENCLOSURES

POWER DISTRIBUTION

CLIMATE CONTROL

IT INFRASTRUCTURE

SOFTWARE & SERVICES

FRIEDHELM LOH GROUP



TS 8701.040 - Base/plinth trim panels, side, 100 mm

Stainless steel for base/plinth components front and rear

To mount between the base/plinth components. For height 200 mm, two 100 mm base/plinth trim panels can be used. Base/Plinth panels can be installed turned through 90° to provide stabilization for bayed base/plinth components.

Features

Model No.	TS 8701.040
Product description	To mount between the base/plinth components. For height 200 mm, two 100 mm base/plinth trim panels can be used.
Material	Stainless steel 1.4301 (AISI 304)
Surface finish	Brushed, grain 400
Supply includes	2 plinth/base trim panels Assembly components
Mounting tip	100 mm side trim panels can be installed rotated through 90° to provide stabilization for bayed base/plinth components. Base/plinth baying brackets are required here
Dimensions	Height: 100 mm
Suitable for	Enclosure type: TS: = 400 mm
Packaging unit	2 pc(s).
Net weight	1.4
Gross weight	1.68
Customs tariff number	94039910
EAN	4028177300088
ETIM 9	EC000721
ECLASS 8.0	27182003