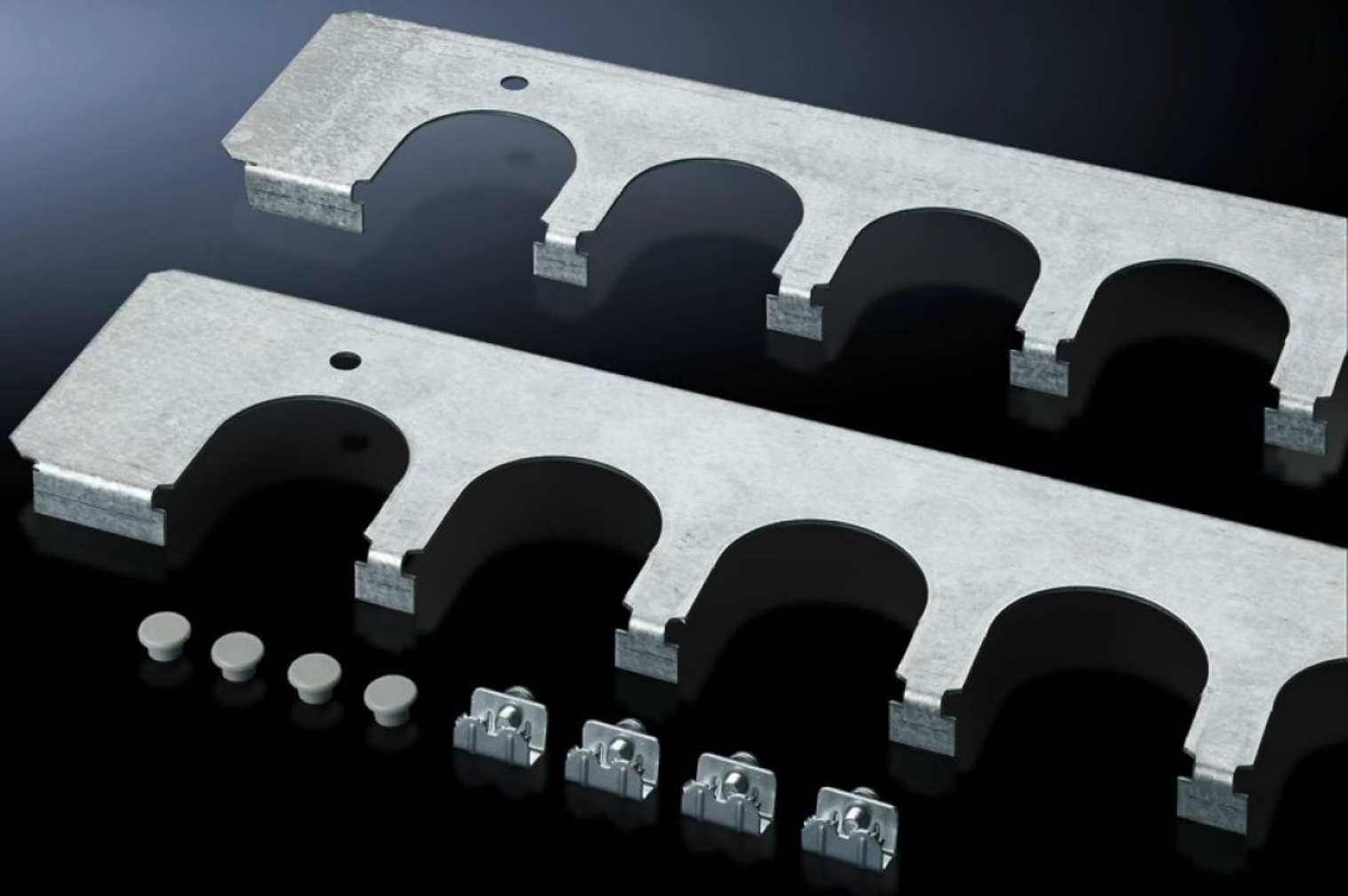
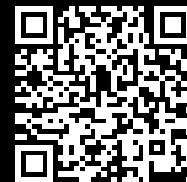


# Rittal – The System.

Faster – better – everywhere.



## SZ 8800.080 Cable entry plates

State: 2025-09-06 (Source: [rittal.com/ca-en](https://www.rittal.com/ca-en))

ENCLOSURES

POWER DISTRIBUTION

CLIMATE CONTROL

IT INFRASTRUCTURE

SOFTWARE & SERVICES

FRIEDHELM LOH GROUP



# SZ 8800.080 - Cable entry plates for installation in TS, SE and PC enclosures

Secure cable entry in combination with cable grommets and connector grommets. Installed instead of the standard base plates.

## Features

Model No.	SZ 8800.080
Product description	A safe cable entry in conjunction with cable routing bushes, connector grommets. Fitted instead of the standard base plates.
Benefits	Particularly well-suited to cables with differing cross-sections Thanks to the enclosure symmetry, the cable entry plates, like the base plates, can also be used in the enclosure depth, on the right and left
Material	Carbon steel
Surface finish	Zinc-plated
Supply includes	Assembly components
Number of cut-outs	8
Suitable for	Enclosure type: TS: = 800 mm Enclosure type: SE Enclosure type: PC
Packaging unit	2 pc(s).
Net weight	1.228
Gross weight	1.46
Customs tariff number	73269098
EAN	4028177212473
ETIM 9	EC002620
ECLASS 8.0	27189261