

Rittal – The System.

Faster – better – everywhere.



TS 8800.380 Adapter rail

State: 2026-04-16 (Source: [rittal.com/ca-en](https://www.rittal.com/ca-en))

ENCLOSURES

POWER DISTRIBUTION

CLIMATE CONTROL

IT INFRASTRUCTURE

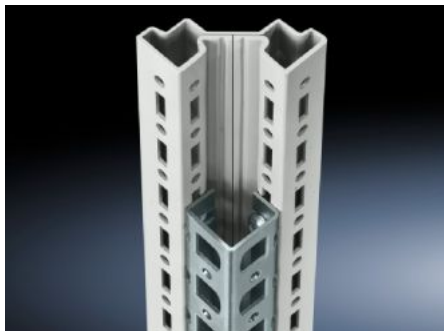
SOFTWARE & SERVICES

FRIEDHELM LOH GROUP



TS 8800.380 - Adapter rail for PS compatibility

Installation in the vertical TS enclosure profiles to create compatibility with: PS hole profile, PS mounting chassis, PS system chassis.



Features

Model No.	TS 8800.380
Product description	To create compatibility with: PS punched rail 23 x 23 mm, PS mounting chassis 23 x 73 mm and PS system chassis 23 x 73 mm.
Material	Carbon steel
Surface finish	Zinc-plated
Supply includes	Assembly screws
Installation options	On the vertical TS, VX SE enclosure section On the horizontal VX SE enclosure section, top, in the width
Suitable for	Enclosure type: TS Height: = 1,800 mm
Packaging unit	4 pc(s).
Net weight	3.724 kg
Gross weight	3.924 kg
Customs tariff number	73269098
ETIM 9	EC002625
ECLASS 8.0	27189234
Product description	TS Adaptor rail, for PS compatibility, for H: 1800 mm