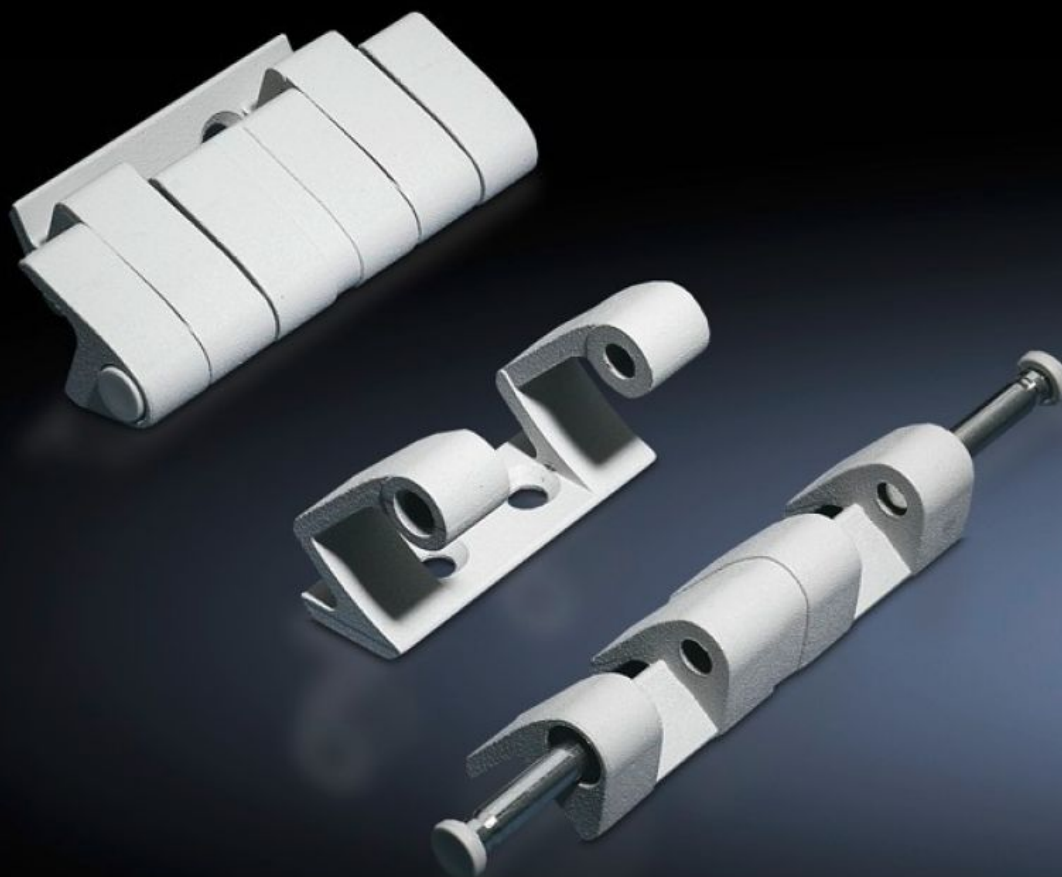


# Rittal – The System.

Faster – better – everywhere.



## SZ 8800.710 180° Hinge

State: 2026-02-09 (Source: [rittal.com/ca-en](https://www.rittal.com/ca-en))

ENCLOSURES

POWER DISTRIBUTION

CLIMATE CONTROL

IT INFRASTRUCTURE

SOFTWARE & SERVICES

FRIEDHELM LOH GROUP



# SZ 8800.710 - 180° Hinge

For extending the door opening angle to 180°.

## Features

Model No.	SZ 8800.710
Material	Precision casting/die-cast zinc
Color	RAL 7035
Supply includes	Assembly components
Door opening angle	180°
Note	The protection category of the enclosure can be reduced. Door stop consistent within a bayed enclosure suite.
Suitable for door variant	Doors with high dynamic loads, door installations up to 900 N
Suitable for enclosure type	TS VX SE
Packaging unit	4 pc(s).
Net weight	0.92
Gross weight	0.977
Customs tariff number	83021000
EAN	4028177595064
ETIM 9	EC001167
ECLASS 8.0	27409219