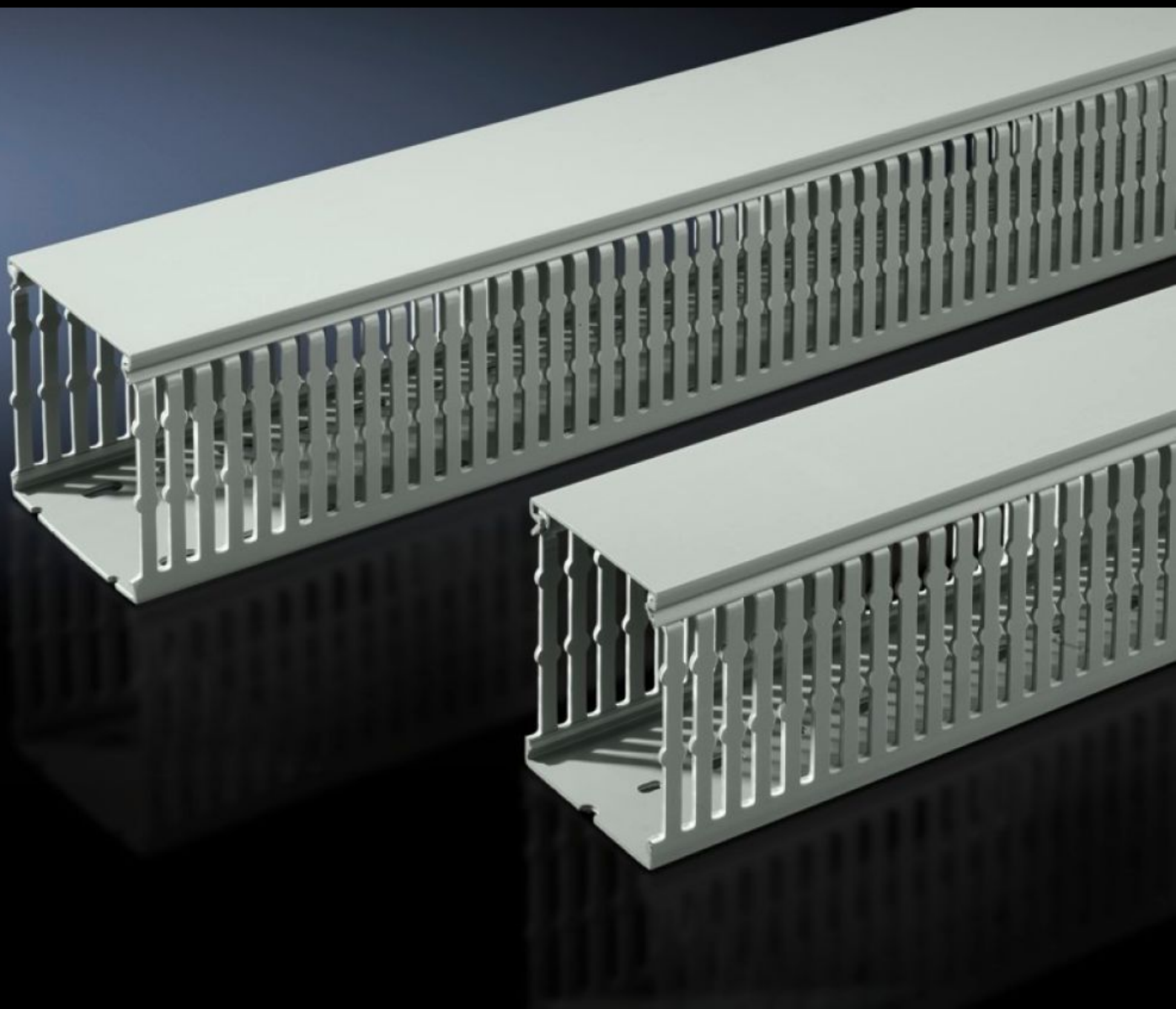


Rittal – The System.

Faster – better – everywhere.



TS 8800.753 Cable duct

State: 2025-08-28 (Source: [rittal.com/ca-en](https://www.rittal.com/ca-en))

ENCLOSURES

POWER DISTRIBUTION

CLIMATE CONTROL

IT INFRASTRUCTURE

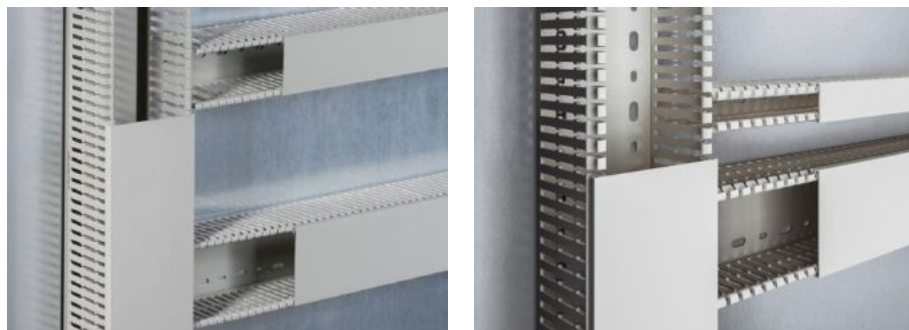
SOFTWARE & SERVICES

FRIEDHELM LOH GROUP



TS 8800.753 - Cable duct

With DIN punchings for direct mounting on the enclosure section or on surfaces such as mounting plates. Predetermined breaking points on the webs and on the cable duct base.



Features

Model No.	TS 8800.753
Version	for mounting plates for mounting on VX system perforation
Product description	With DIN punchings for direct mounting on the enclosure section or on surfaces such as mounting plates. Predetermined breaking points on the webs and on the cable duct base.
Material	Hard PVC Flame-resistant, self-extinguishing Temperature resistant to +60 °C
Color	Similar to RAL 7030
Supply includes	Cable duct with cover
Bar width	5.5 mm
Slot width	4.5 mm
Installation options	With DIN punchings for direct mounting on the enclosure section or on surfaces such as mounting plates. If the rear mounting plate is aligned flush with the enclosure frame (installation position ± 0 mm), then the horizontal cable ducts will be flush against the cable ducts mounted on the enclosure section
Note	Can be shortened for other dimensions.

Features

Dimensions	Width: 80 mm Depth: 80 mm Length: 2,000 mm
Packaging unit	12 pc(s).
Net weight	17.88
Gross weight	18.72
Customs tariff number	39259020
EAN	4028177445475
ETIM 9	EC000012
ECLASS 8.0	27400703

Approvals

Explanations	Declaration of conformity Declaration of conformity UK
--------------	---