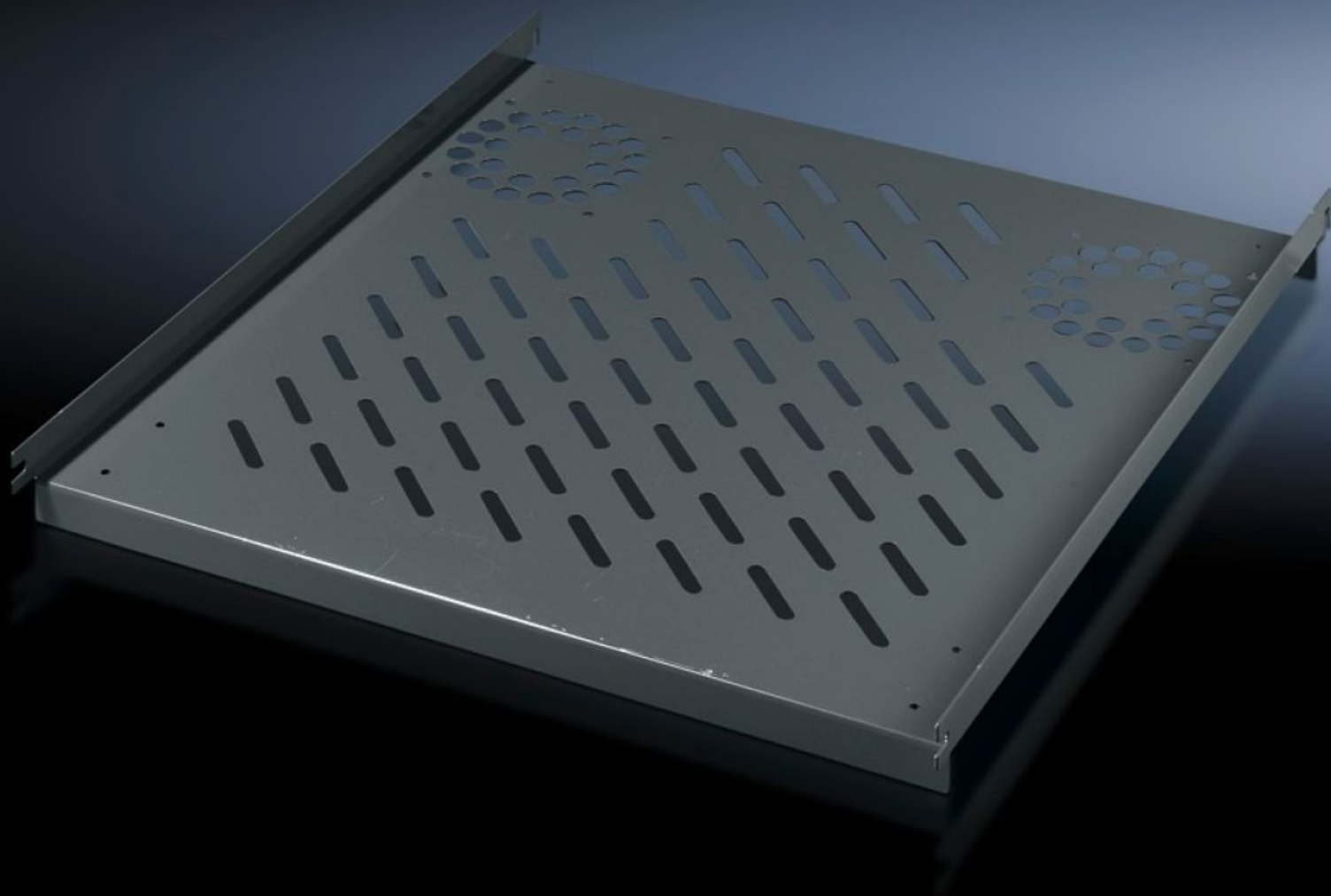


**Rittal – The System.**

Faster – better – everywhere.



**PC 8800.900**

**Component Shelf, Static Installation**

State: 2025-08-15 (Source: [rittal.com/ca-en](https://www.rittal.com/ca-en))

ENCLOSURES

POWER DISTRIBUTION

CLIMATE CONTROL

IT INFRASTRUCTURE

SOFTWARE & SERVICES

FRIEDHELM LOH GROUP



# PC 8800.900 - Component Shelf, Static Installation for TS, VX SE, PC, IW, prepared for fan expansion kit

Mounted directly on the vertical enclosure profile. Simply locate on 4 pre-installed screws and secure.

## Features

|                                     |  |
|-------------------------------------|--|
| Model No.                           | PC 8800.900  |
| Product description                 | Simply locate the 4 pre-installed screws and secure.   |
| Material                            | Carbon steel   |
| Color                               | RAL 7015   |
| Supply includes                     | Assembly components  |
| Installation options                | On the vertical TS, VX SE enclosure section  |
| Load capacity                       | 40 kg surface load, static   |
| Note                                | For enclosures without a mounting plate  |
| Support area                        | Width: 507 mm<br>Depth: 550 mm   |
| Suitable for                        | Enclosure type: TS<br>VX SE<br>PC<br>IW<br>Width: = 600 mm<br>Depth: = 600 mm  |
| Packaging unit                      | 1 pc(s).   |
| Net weight                          | 3.396  |
| Gross weight                        | 3.52   |
| PCF/VE (cradle-to-gate)             | 17.5 kg CO2 eq (Cat B)   |
| Information regarding the PCF class | Category B: PCF value (cradle-to-gate) calculated approximately on the basis of the product weight and self-declared |
| Customs tariff number               | 94039910   |

# Features

|            |               |
|------------|---------------|
| EAN        | 4028177263086 |
| ETIM 9     | EC002620      |
| ECLASS 8.0 | 27189261      |