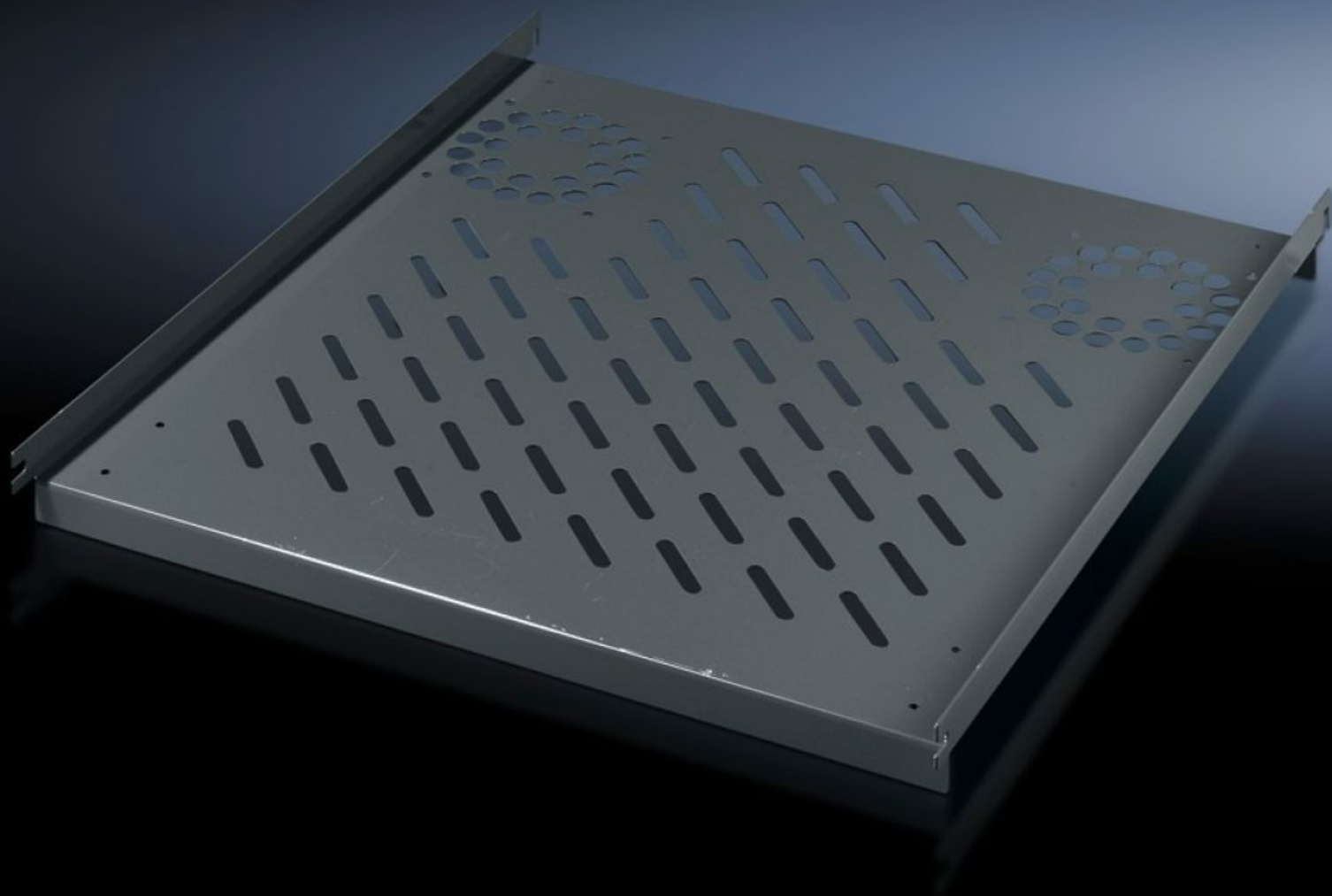


Rittal – The System.

Faster – better – everywhere.



PC 8800.910

Component Shelf, Static Installation

State: 2025-07-13 (Source: [rittal.com/ca-en](https://www.rittal.com/ca-en))

ENCLOSURES

POWER DISTRIBUTION

CLIMATE CONTROL

IT INFRASTRUCTURE

SOFTWARE & SERVICES

FRIEDHELM LOH GROUP



PC 8800.910 - Component Shelf, Static Installation for TS, VX SE, PC, IW, prepared for fan expansion kit

Mounted directly on the vertical enclosure profile. Simply locate on 4 pre-installed screws and secure.

Features

Model No.	PC 8800.910
Product description	Simply locate the 4 pre-installed screws and secure.
Material	Carbon steel
Color	RAL 7015
Supply includes	Assembly components
Installation options	On the vertical TS, VX SE enclosure section
Load capacity	40 kg surface load, static
Note	For enclosures without a mounting plate
Support area	Width: 507 mm Depth: 750 mm
Suitable for	Enclosure type: TS VX SE PC IW Width: = 600 mm Depth: = 800 mm
Packaging unit	1 pc(s).
Net weight	5.24
Gross weight	5.516
PCF/VE (cradle-to-gate)	22.9 kg CO2 eq (Cat B)
Information regarding the PCF class	Category B: PCF value (cradle-to-gate) calculated approximately on the basis of the product weight and self-declared
Customs tariff number	94039910

Features

EAN	4028177266919
ETIM 9	EC002620
ECLASS 8.0	27189261