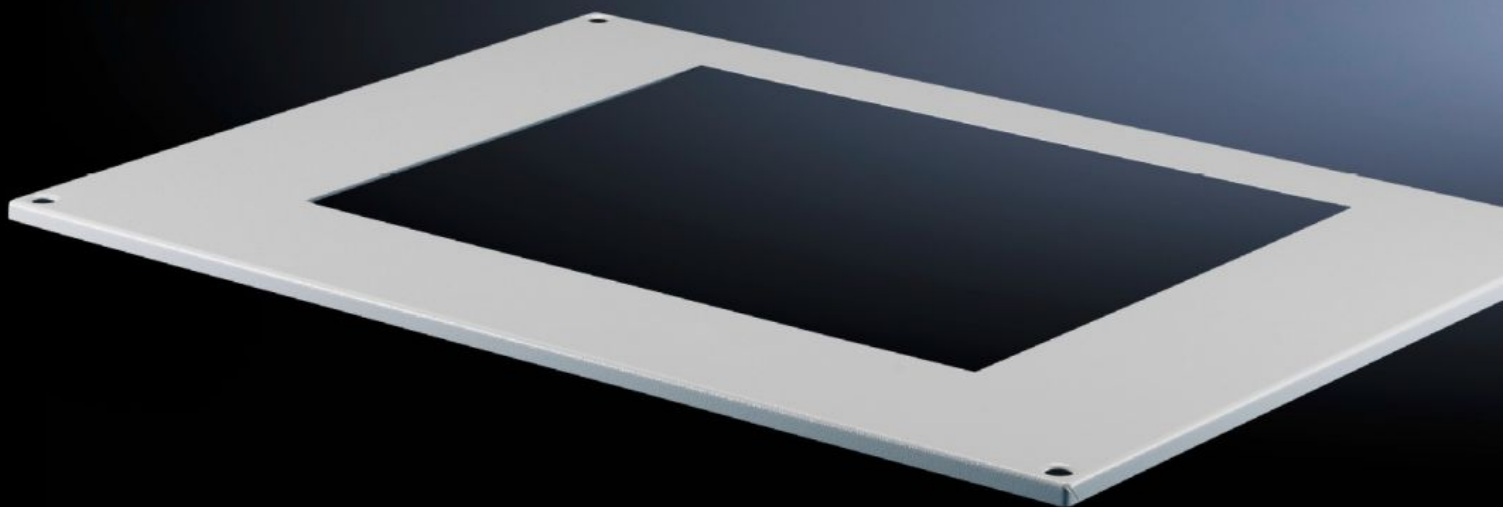


# Rittal – The System.

Faster – better – everywhere.



## TS 8801.350 TS Roof Plates

State: 2025-05-25 (Source: [rittal.com/ca-en](https://www.rittal.com/ca-en))

ENCLOSURES

POWER DISTRIBUTION

CLIMATE CONTROL

IT INFRASTRUCTURE

SOFTWARE & SERVICES

FRIEDHELM LOH GROUP



# TS 8801.350 - TS Roof Plates

## Features

Model No.	TS 8801.350
Product description	For installing roof-mounted cooling units and roof-mounted air/ water heat exchangers. The cut-outs in the roof plate are arranged so that the roof-mounted cooling units are centered on the enclosure.
Benefits	Simple, fast mounting
Material	Carbon steel
Color	RAL 7035
Supply includes	Assembly components
Mounting cut-out	Width:490 mm Depth:390 mm
Distance cut-out to back	61.3 mm
Note	<p>When mounting cooling units on the roof plate 8801.310 there may be a collision with the transportation eyebolts of the enclosure. For this reason, roof fastening screws are supplied loose with the roof plates.</p> <p>Attachment to the roof plate 8801.310 is from the inside using metal brackets and retaining clamps.</p>
Suitable for Model No.	3209.... 3210.... 3383.... 3384.... 3385.... 3273....
Dimensions	Width: 1,167.5 mm Height: 13 mm Depth: 567.5 mm

# Features

Suitable for	Enclosure type: TS Width: = 1,200 mm Depth: = 600 mm
Packaging unit	1 pc(s).
Net weight	8.522
Gross weight	8.97
Customs tariff number	73269098
EAN	4028177360648
ETIM 9	EC000744
ECLASS 8.0	27182405

# Approvals

Certificates	EAC
--------------	-----