

Rittal – The System.

Faster – better – everywhere.



TS 8802.100

Section for cable entry, center

State: 2026-05-22 (Source: [rittal.com/ca-en](https://www.rittal.com/ca-en))

ENCLOSURES

POWER DISTRIBUTION

CLIMATE CONTROL

IT INFRASTRUCTURE

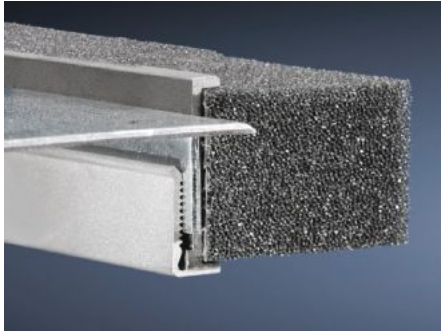
SOFTWARE & SERVICES

FRIEDHELM LOH GROUP



TS 8802.100 - Section for cable entry, center for TS, TP

Inserted in base plate.



Features

Model No.	TS 8802.100
Product description	To seal the cable entry between the base plates.
Benefits	Particularly well-suited to cables with identical cross-sections
Technical specifications	Foam rubber cable clamping profile: Cross-section: 30 x 25 mm
Applications	For top-mounting on base plates
Material	Extruded aluminum section Foam rubber cable clamping profile: PU foam
Supply includes	Plug-in sections, incl. foam rubber clamp strip
Note	2 pc(s). are sufficient for one base opening up to an enclosure width of 800 mm From an enclosure width of 1,000 mm, two base openings are provided. 4 units per enclosure may be fitted
Suitable for	Enclosure type: TS: = 1,000 mm Enclosure type: TP
Protection category IP to IEC 60529	IP 55 if correctly installed
Packaging unit	4 pc(s).
Net weight	0.32 kg
Gross weight	0.351 kg
Customs tariff number	76042990

Features

ETIM 9	EC000211
ECLASS 8.0	27142421
Product description	TS profile for cable entry, centered, for TS, VX SE, TP, for W: 1000 mm
