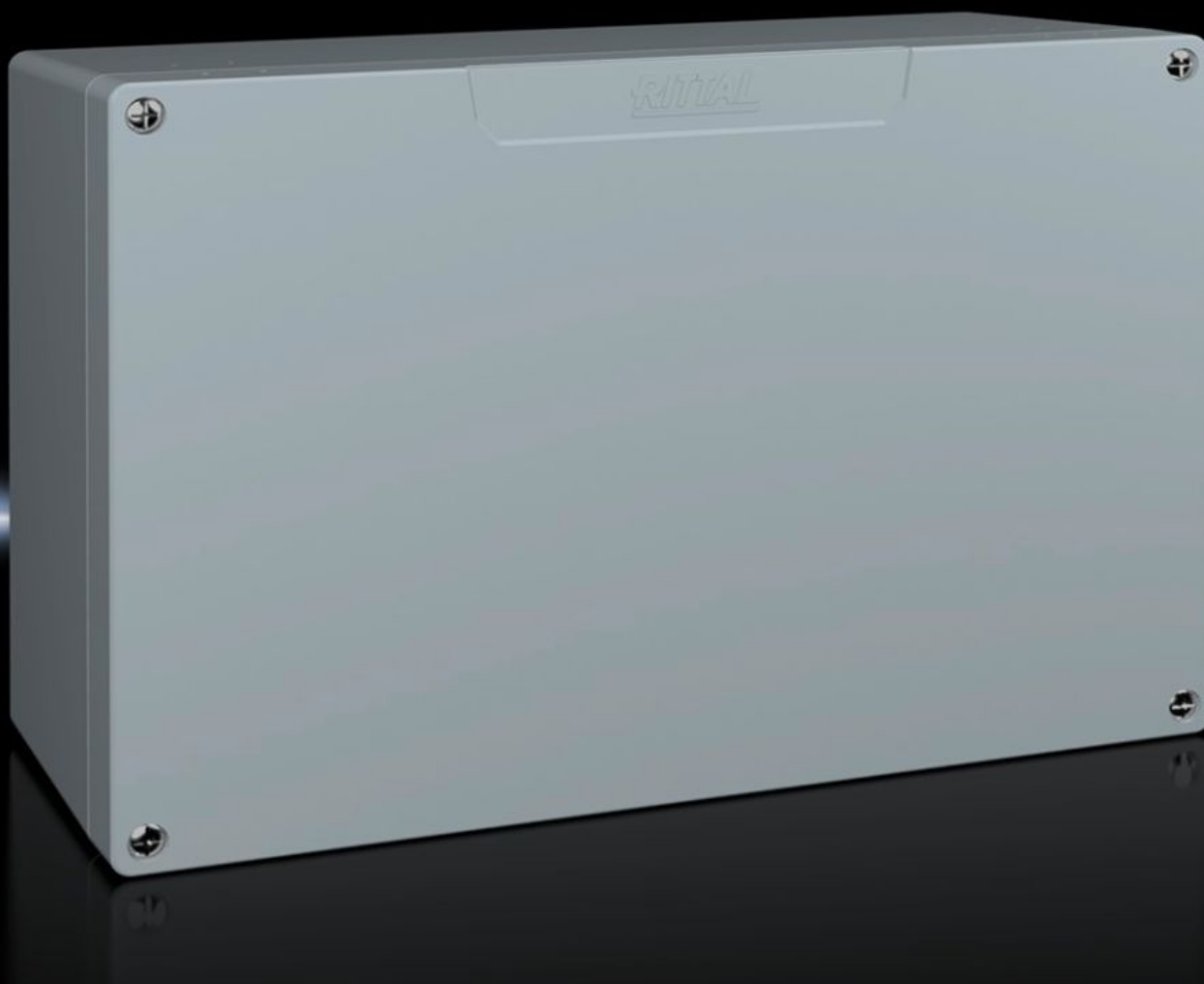


Rittal – The System.

Faster – better – everywhere.



GA 9118.210

Cast aluminum housing GA

State: 2025-08-02 (Source: [rittal.com/ca-en](https://www.rittal.com/ca-en))

ENCLOSURES

POWER DISTRIBUTION

CLIMATE CONTROL

IT INFRASTRUCTURE

SOFTWARE & SERVICES

FRIEDHELM LOH GROUP



GA 9118.210 - Cast aluminum housing GA

Spray-finished cast aluminum housing. Protection category IP 66.



Features

Model No.	GA 9118.210
Material	Housing: Cast aluminum Cover: cast aluminum, all-round CR foam rubber round core seal
Surface finish	Textured paint
Color	RAL 7001
Supply includes	Housing with cover Cover screws, captive Screws for attaching support rails Screw for connection of the PE conductor
Protection category NEMA	NEMA 4
Protection category IP to EN 60 529	IP 66
IK code	IK08
Dimensions	Width: 330 mm Height: 230 mm Depth: 113 mm
Base material	Cast aluminum
Packaging unit	1 pc(s).

Features

Net weight	3.577
Gross weight	3.785
Customs tariff number	84879090
EAN	4028177145481
ETIM 9	EC000261
ECLASS 8.0	27180101

Approvals

Explanations	Declaration of conformity Declaration of conformity UK
--------------	---