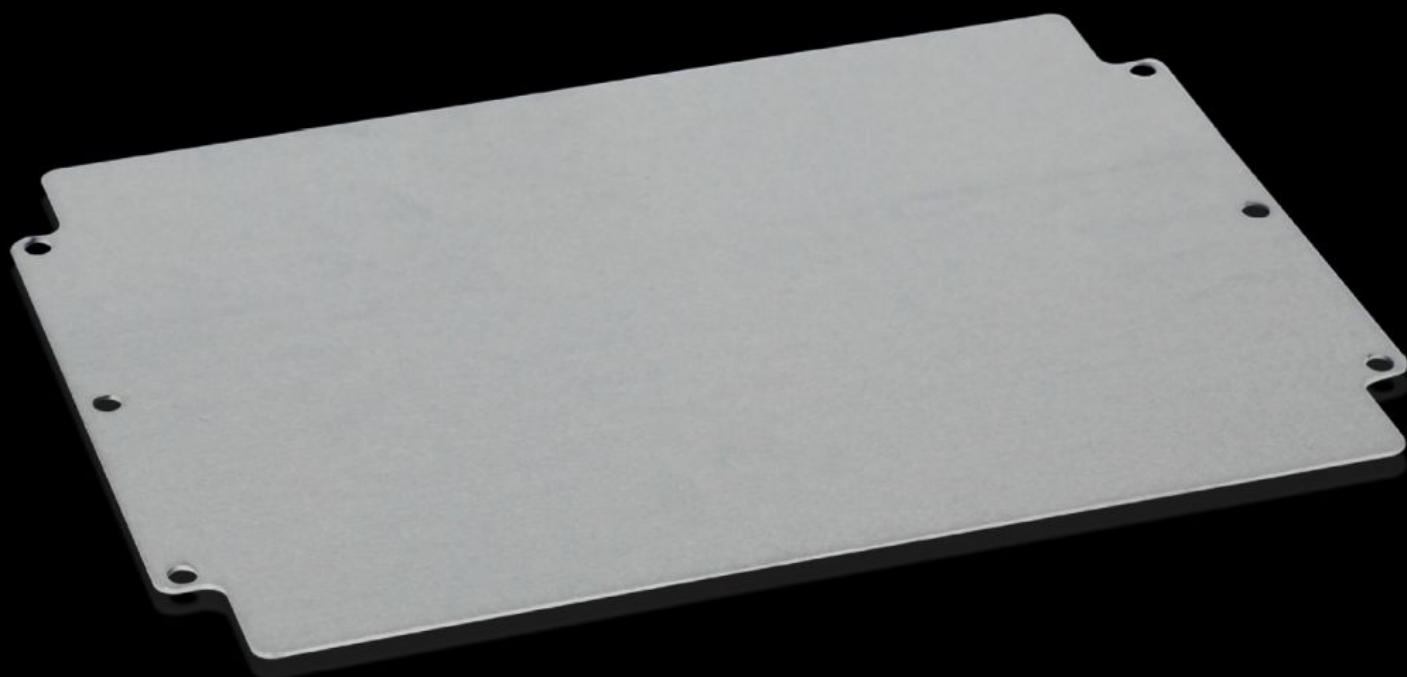


Rittal – The System.

Faster – better – everywhere.



GA 9118.700 Mounting panel

State: 2025-05-05 (Source: [rittal.com/ca-en](https://www.rittal.com/ca-en))

ENCLOSURES

POWER DISTRIBUTION

CLIMATE CONTROL

IT INFRASTRUCTURE

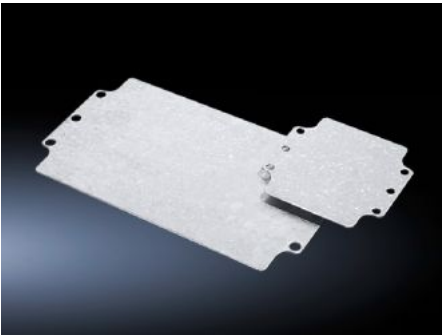
SOFTWARE & SERVICES

FRIEDHELM LOH GROUP



GA 9118.700 - Mounting panel For GA

For individual interior installation, with mounting holes.



Features

Model No.	GA 9118.700
Product description	For individual interior installation, with mounting holes.
Material	Carbon steel
Surface finish	Zinc-plated
Dimensions of mounting plate (W x H)	314 mm x 214 mm
Suitable for	Enclosure type: GA GA Width: = 330 mm Height: = 230 mm
Packaging unit	1 pc(s).
Net weight	0.77
Gross weight	0.78
PCF per pack (cradle-to-gate)	4 kg CO2 eq (Cat B)
Note on PCF category	Category B: PCF value (cradle-to-gate) based on the product weight, approximately calculated and self-declared
Customs tariff number	73269098
EAN	4028177154384
ETIM 9	EC000213

Features

ECLASS 8.0

27409216