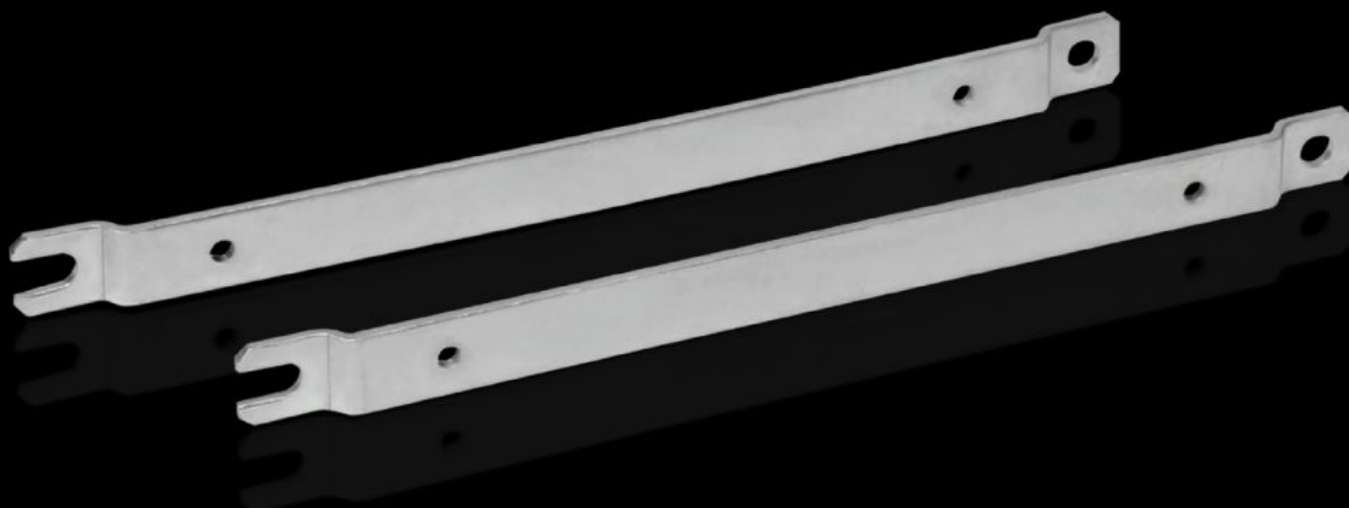


# Rittal – The System.

Faster – better – everywhere.



## GA 9121.230

### Wall mounting bracket

State: 2025-07-19 (Source: [rittal.com/ca-en](https://www.rittal.com/ca-en))

ENCLOSURES

POWER DISTRIBUTION

CLIMATE CONTROL

IT INFRASTRUCTURE

SOFTWARE & SERVICES

FRIEDHELM LOH GROUP



# GA 9121.230 - Wall mounting bracket For GA

For external mounting on surfaces – no need to disassemble the cover if pre-assembled.



## Features

|                                     |  |
|-------------------------------------|--|
| Model No.                           | GA 9121.230  |
| Product description                 | For external mounting on surfaces – no need to disassemble the cover if pre-assembled.                               |
| Material                            | Carbon steel   |
| Surface finish                      | Zinc-plated  |
| Suitable for                        | Enclosure type: GA<br>Height: $\geq 230$ mm  |
| Packaging unit                      | 2 pc(s).   |
| Net weight                          | 0.26   |
| Gross weight                        | 0.287  |
| PCF/VE (cradle-to-gate)             | 1.1 kg CO2 eq (Cat B)  |
| Information regarding the PCF class | Category B: PCF value (cradle-to-gate) calculated approximately on the basis of the product weight and self-declared |
| Customs tariff number               | 83024900   |
| EAN                                 | 4028177154520  |
| ETIM 9                              | EC002625   |
| ECLASS 8.0                          | 27189234   |