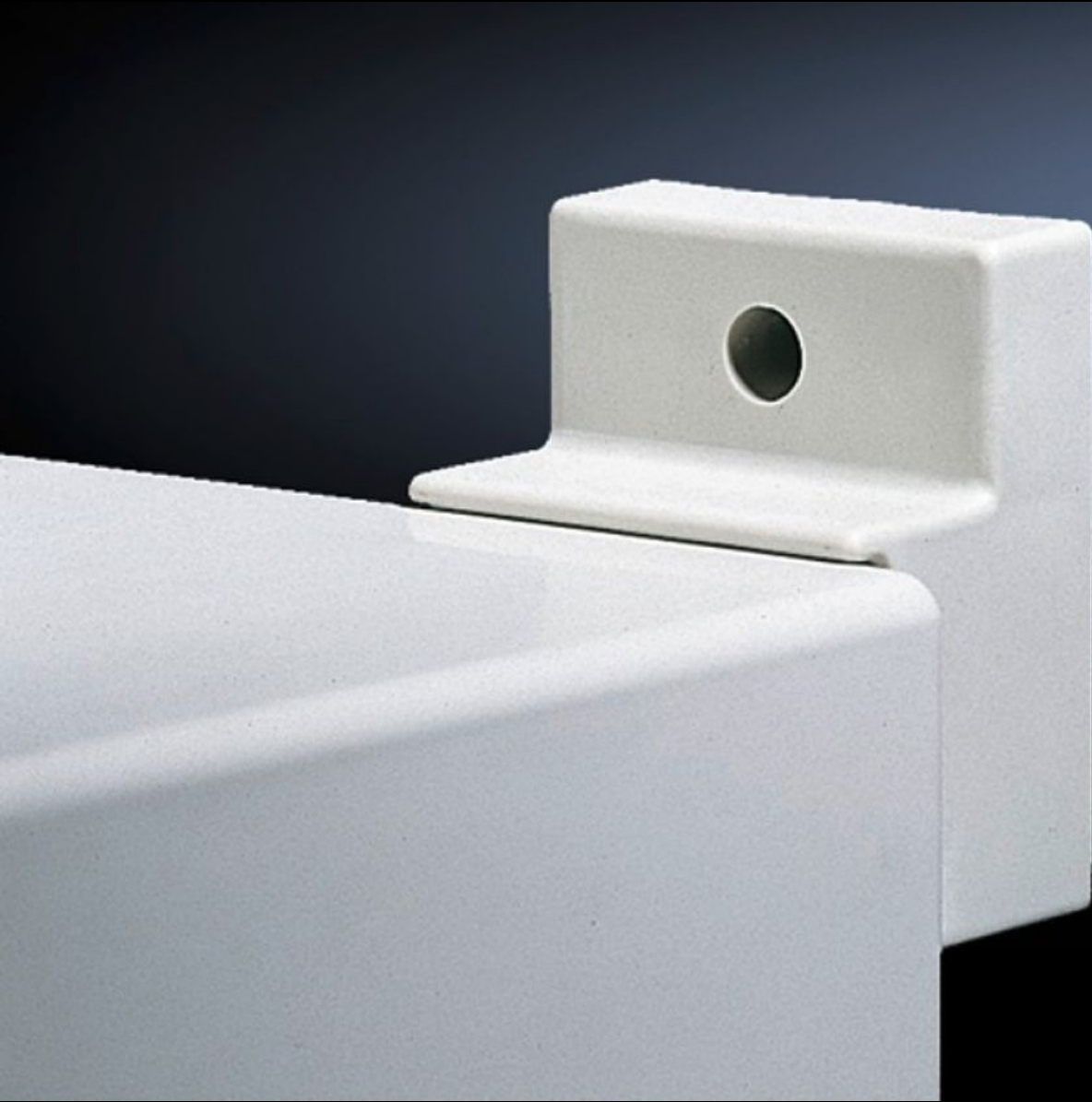


Rittal – The System.

Faster – better – everywhere.



KS 9266.000

Wall mounting bracket

State: 2026-07-04 (Source: [rittal.com/ca-en](https://www.rittal.com/ca-en))

ENCLOSURES

POWER DISTRIBUTION

CLIMATE CONTROL

IT INFRASTRUCTURE

SOFTWARE & SERVICES

FRIEDHELM LOH GROUP



KS 9266.000 - Wall mounting bracket for KS

For external mounting of the housing. Wall clearance 30 mm.

Features

Model No.	KS 9266.000
Product description	To enable wall-mounting of the enclosure from the outside of the enclosure only.
Material	Fiber-glass reinforced polycarbonate with graphite additive
Color	Similar to RAL 9011
Supply includes	Assembly components for mounting on the enclosure
Installation options	For external mounting on the housing
Note on Model No.:	for Ex applications
Suitable for	Enclosure type: KS
Packaging unit	4 pc(s).
Net weight	0.232 kg
Gross weight	0.235 kg
Customs tariff number	83024900
ETIM 9	EC002625
ECLASS 8.0	27189234
Product description	KS Wall mounting bracket for KS