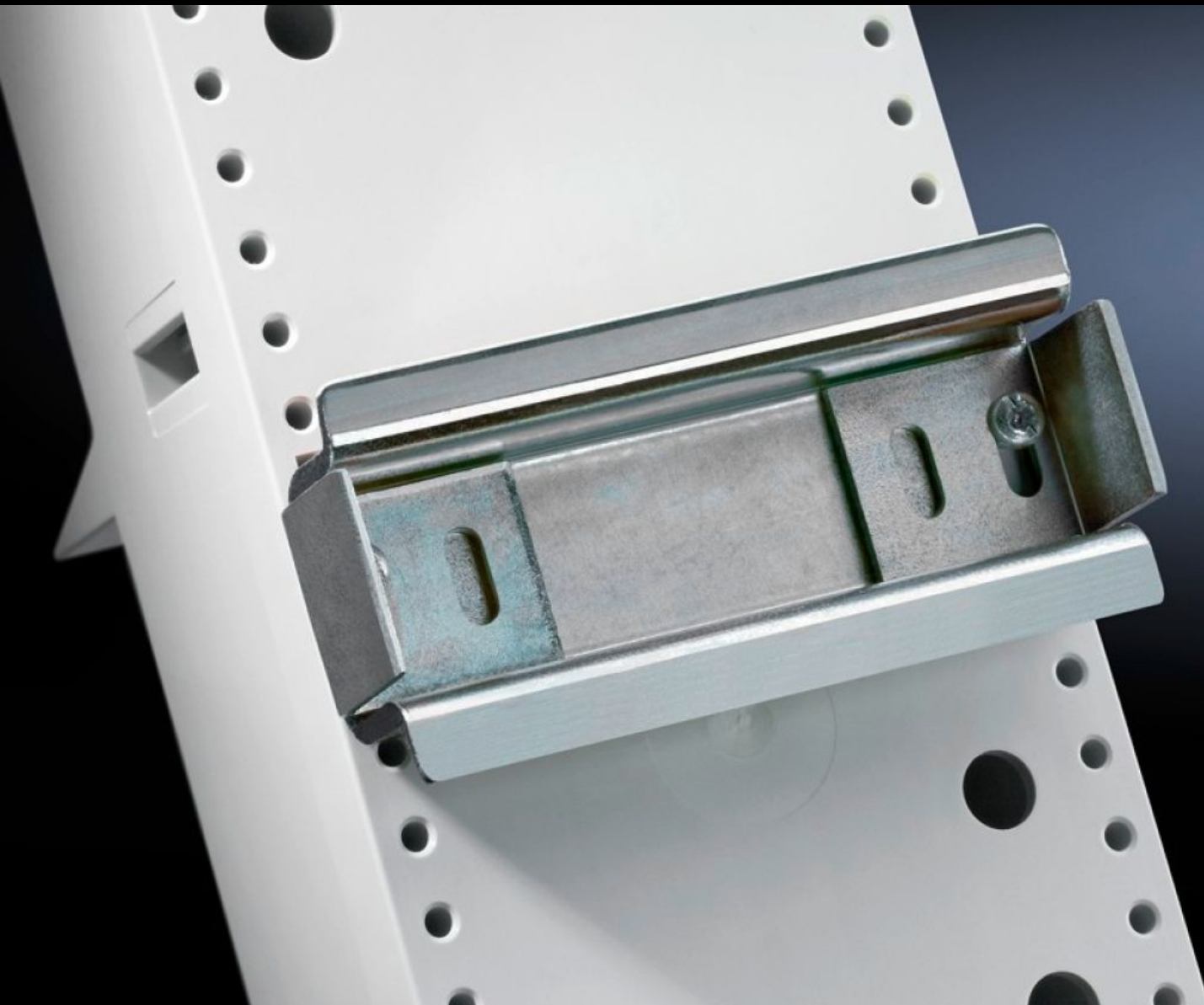


Rittal – The System.

Faster – better – everywhere.



SV 9320.120

Support Rail 35 x 15 mm

State: 2025-08-01 (Source: [rittal.com/ca-en](https://www.rittal.com/ca-en))

ENCLOSURES

POWER DISTRIBUTION

CLIMATE CONTROL

IT INFRASTRUCTURE

SOFTWARE & SERVICES

FRIEDHELM LOH GROUP



SV 9320.120 - Support Rail 35 x 15 mm for Mini-PLS/CB component adapters

Support rails for Mini-PLS/circuit-breaker component adapters.



Features

Model No.	SV 9320.120
Material	Carbon steel
Surface finish	Zinc-plated
Supply includes	Assembly screws and side anti-slip guard
Suitable for Model No.	9342.400 9342.410 9629.000
Dimensions	Width: 72 mm
Packaging unit	5 pc(s).
Net weight	0.36
Gross weight	0.403
PCF/VE (cradle-to-gate)	1.5 kg CO2 eq (Cat B)
Information regarding the PCF class	Category B: PCF value (cradle-to-gate) calculated approximately on the basis of the product weight and self-declared
Customs tariff number	73269098
EAN	4028177219762
ETIM 9	EC001285

Features

ECLASS 8.0

27141143