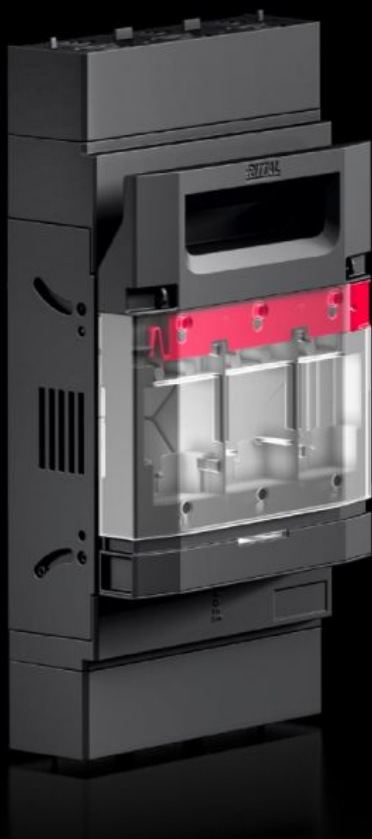


Rittal – The System.

Faster – better – everywhere.



RX 9362.315

RiLineX NH fuse switch disconnecter

State: 2026-01-02 (Source: [rittal.com/ca-en](https://www.rittal.com/ca-en))

ENCLOSURES

POWER DISTRIBUTION

CLIMATE CONTROL

IT INFRASTRUCTURE

SOFTWARE & SERVICES

FRIEDHELM LOH GROUP



RX 9362.315 - RiLineX NH fuse switch disconnecter

RiLineX NH fuse-switch-disconnector in size 3 for 60 mm busbar systems. The cover is lockable, sealable and features visual fuse monitoring. The safe voltage test takes place via the integrated measurement points on the cover. The NH fuse-switch-disconnecters have a park position to simplify maintenance work. Connection version with M10 screw connection. Cable outlet can be individually converted at the top or bottom. Including electronic fuse monitoring.

Features

Model No.	RX 9362.315
Benefits	Cover, lockable and sealable Voltage test through separate opening Tool-free conversion of the cable outlet Park position for simplified maintenance work High rated voltage 800 V ready All variants also with electronic fuse monitoring
Material	Polyamide (PA 6) Fire behavior corresponding to UL 94 Contact tracks: Electrolytic copper, silver-plated
Color	RAL 9005 RAL 35745
Supply includes	Incl. connection plug for electrical fuse monitoring
For bar systems with center-to-center spacing	60 mm
Cable outlet	Top/bottom
Type of connection (electrical)	Screw M10
Rated current max.	630 A
Rated operating current max.	630 A
Rated operating voltage	690 V AC
For NH size	3
Test specification	IEC 60 947-3 IEC 60 269-2 (fuse inserts)

Features

Dimensions	Width: 250 mm Height: 348.6 mm Depth: 134.9 mm
Operating temperature range	-5 °C...35 °C
Storage temperature range	-25 °C...70 °C
Suitable for busbars	15 x 5/10 20 x 5/10 30 x 5/10
Suitable for busbar system	RiLineX RiLine60
Number of poles	3-pole
Contamination level	3
With electronic fuse monitoring	Yes
Protection category IP to IEC 60 529	IP 2XB
Fire load	47.58 MJ/m ²
Power dissipation (max.)	101 W
Packaging unit	1 pc(s).
Net weight	4.7
Gross weight	4.83
Copper weight (kg per piece)	2.255
Customs tariff number	85369095
ETIM 9	EC001040

Approvals

Explanations	Declaration of conformity
--------------	---------------------------