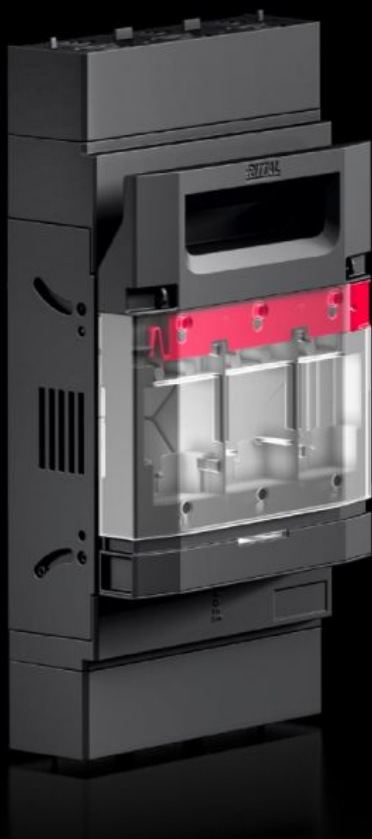


Rittal – The System.

Faster – better – everywhere.



RX 9363.215

RiLineX NH fuse switch disconnecter

State: 2026-01-30 (Source: [rittal.com/ca-en](https://www.rittal.com/ca-en))

ENCLOSURES

POWER DISTRIBUTION

CLIMATE CONTROL

IT INFRASTRUCTURE

SOFTWARE & SERVICES

FRIEDHELM LOH GROUP



RX 9363.215 - RiLineX NH fuse switch disconnecter

RiLineX NH fuse-switch-disconnector in sizes 2 for mounting plates. The cover is lockable, sealable and features visual fuse monitoring. The safe voltage test takes place via the integrated measurement points on the cover. The NH fuse-switch-disconnecters have a park position to simplify maintenance work. Connection version with M10 screw connection. Including electronic fuse monitoring.

Features

Model No.	RX 9363.215
Version	For mounting panel assembly. With electronic fuse monitoring
Benefits	Cover, lockable and sealable Voltage test through separate opening Tool-free conversion of the cable outlet Park position for simplified maintenance work All variants also with electronic fuse monitoring
Material	Polyamide (PA 6) Fire behavior corresponding to UL 94 Contact tracks: Electrolytic copper, silver-plated
Color	RAL 9005 RAL 35745
Supply includes	Incl. connection plug for electrical fuse monitoring
for mounting plate assembly	Yes
Cable outlet	Top/bottom
Type of connection (electrical)	Screw M10
Rated insulation voltage	1,000 kV
Rated current max.	400 A
Rated operating current max.	400 A
Rated operating voltage	690 V AC
For NH size	2

Features

Test specification	IEC 60 947-3 IEC 60 269-2 (fuse inserts)
Dimensions	Width: 208.5 mm Height: 348.7 mm Depth: 128.7 mm
Operating temperature range	-5 °C...35 °C
Storage temperature range	-25 °C...70 °C
Number of poles	3-pole
Contamination level	3
With electronic fuse monitoring	Yes
Protection category IP to IEC 60 529	IP 2XB
Fire load	48.8 MJ/m²
Power dissipation (max.)	71 W
Packaging unit	1 pc(s).
Net weight	3.7
Gross weight	3.746
Copper weight (kg per piece)	1.32
Customs tariff number	85369095
ETIM 9	EC001040

Approvals

Explanations	Declaration of conformity
--------------	---------------------------