

**Rittal – The System.**

Faster – better – everywhere.



**RX 9365.013**

**RiLineX baying connector**

State: 2026-05-22 (Source: [rittal.com/ca-en](http://rittal.com/ca-en))

ENCLOSURES

POWER DISTRIBUTION

CLIMATE CONTROL

IT INFRASTRUCTURE

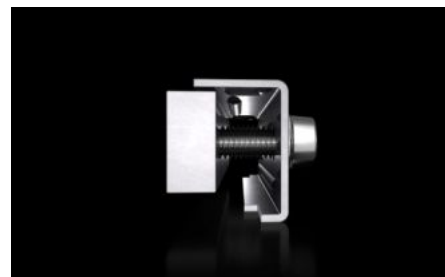
SOFTWARE & SERVICES

FRIEDHELM LOH GROUP



# RX 9365.013 - RiLineX baying connector For busbars

Long busbar connector for the enclosure-to-enclosure baying set, for connecting modular RiLineX boards. The 3-pole baying set (9360104) is additionally required.



## Features

Model No.	RX 9365.013
Material	Upper part: carbon steel, zinc-plated Contact plate: E-Cu, tin-plated
Rated current (max.)	800 A
Dimensions	Width: 130 mm
Suitable for busbars	15 x 5/10 20 x 5/10 30 x 5/10
Packaging unit	3 pc(s).
Net weight	1.5 kg
Gross weight	1.593 kg
Copper weight (kg per piece)	0.99
PCF/VE (cradle-to-gate)	8.7
Customs tariff number	73269098
ETIM 9	EC002622
Product description	RX baying connector for E-Cu 15x5-30x10 mm, L: 130 mm

# Approvals

---

Approvals	UL + C-UL (listed)
Explanations	Declaration of conformity PCF-declaration

---