

Rittal – The System.

Faster – better – everywhere.



RX 9365.725

RiLineX mounting rail for device adapter

State: 2026-05-25 (Source: [rittal.com/ca-en](https://www.rittal.com/ca-en))

ENCLOSURES

POWER DISTRIBUTION

CLIMATE CONTROL

IT INFRASTRUCTURE

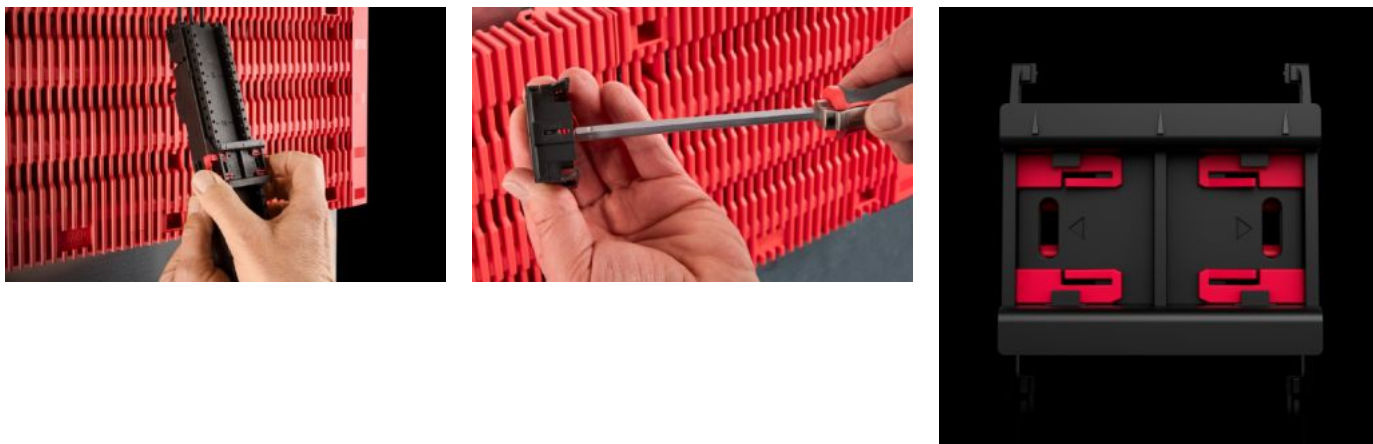
SOFTWARE & SERVICES

FRIEDHELM LOH GROUP



RX 9365.725 - RiLineX mounting rail for device adapter

RiLineX support rails for device adapters of width 54 mm for 60 mm busbar systems. For mounting surface-mounted devices with snap-on fastening on device adapters and device carriers.



Features

Model No.	RX 9365.725
Version	with locking clip
Material	Polyamide (PA 6) Fire behavior corresponding to UL 94
Color	RAL 9005 RAL 35745
Suitable for Model No.	9360740 9360760 9360780
Dimensions	Width: 54 mm Height: 10 mm
Packaging unit	8 pc(s).
Net weight	0.08 kg
Gross weight	0.107 kg
PCF/VE (cradle-to-gate)	0.53
Customs tariff number	39269097

Features

ETIM 9

EC001285

Product description

RX support bar with locking clip, W: 54 mm

Approvals

Explanations

Declaration of conformity

PCF-declaration