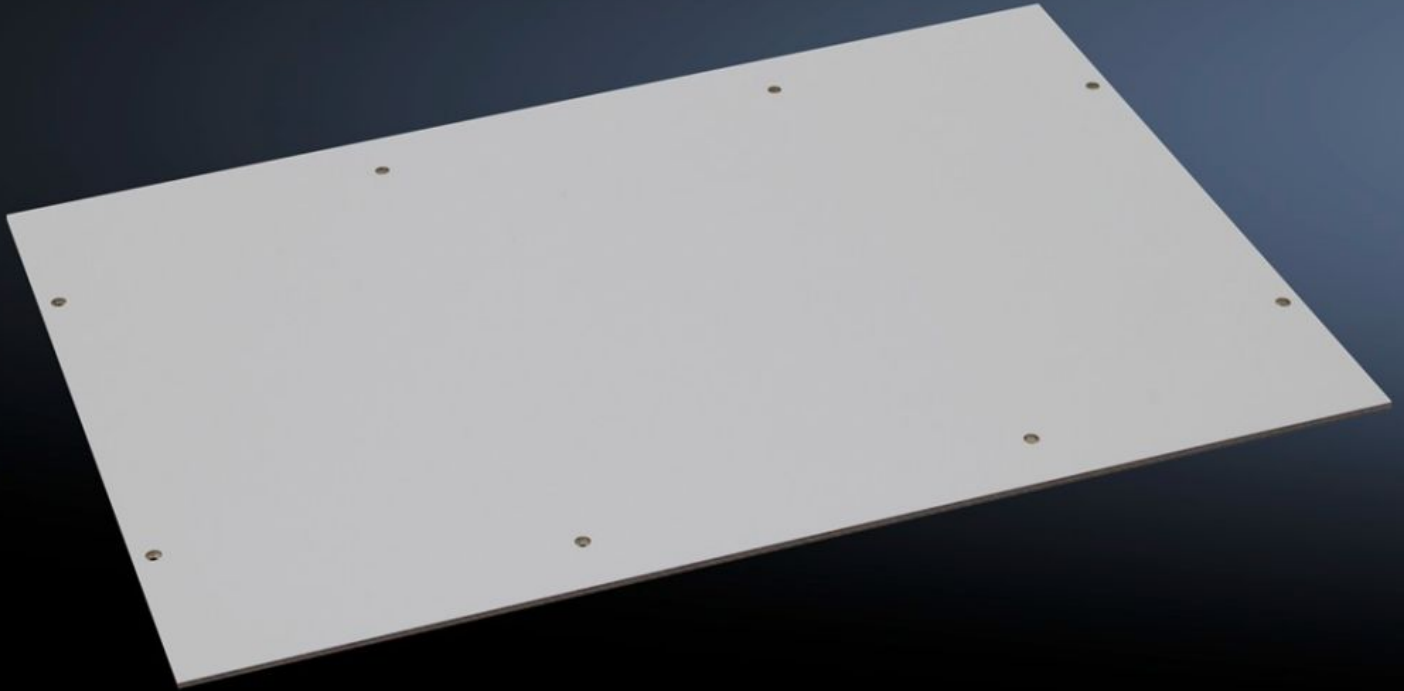


Rittal – The System.

Faster – better – everywhere.



PK 9550.000 Mounting panel

State: 2026-04-05 (Source: [rittal.com/ca-en](https://www.rittal.com/ca-en))

ENCLOSURES

POWER DISTRIBUTION

CLIMATE CONTROL

IT INFRASTRUCTURE

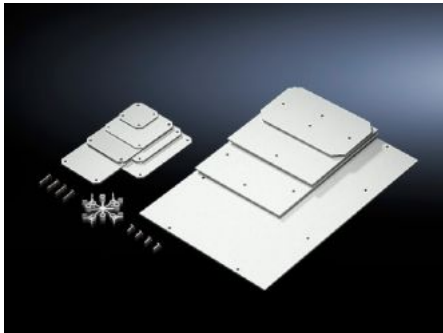
SOFTWARE & SERVICES

FRIEDHELM LOH GROUP



PK 9550.000 - Mounting panel for PK

For individual interior installation.



Features

Model No.	PK 9550.000
Product description	For individual interior installation.
Material	2.5 mm melamine phenol-coated laminated paper
Color	RAL 7035
Supply includes	Mounting panel Self-tapping assembly screws
Dimensions of mounting plate (W x H)	331 mm x 220 mm
Suitable for	Enclosure type: PK Width: = 360 mm Height: = 254 mm
Packaging unit	4 pc(s).
Net weight	1.2 kg
Gross weight	1.251 kg
Customs tariff number	39269097
ETIM 9	EC000213
ECLASS 8.0	27409216
Product description	PK Mounting plate, WH: 331x220 mm