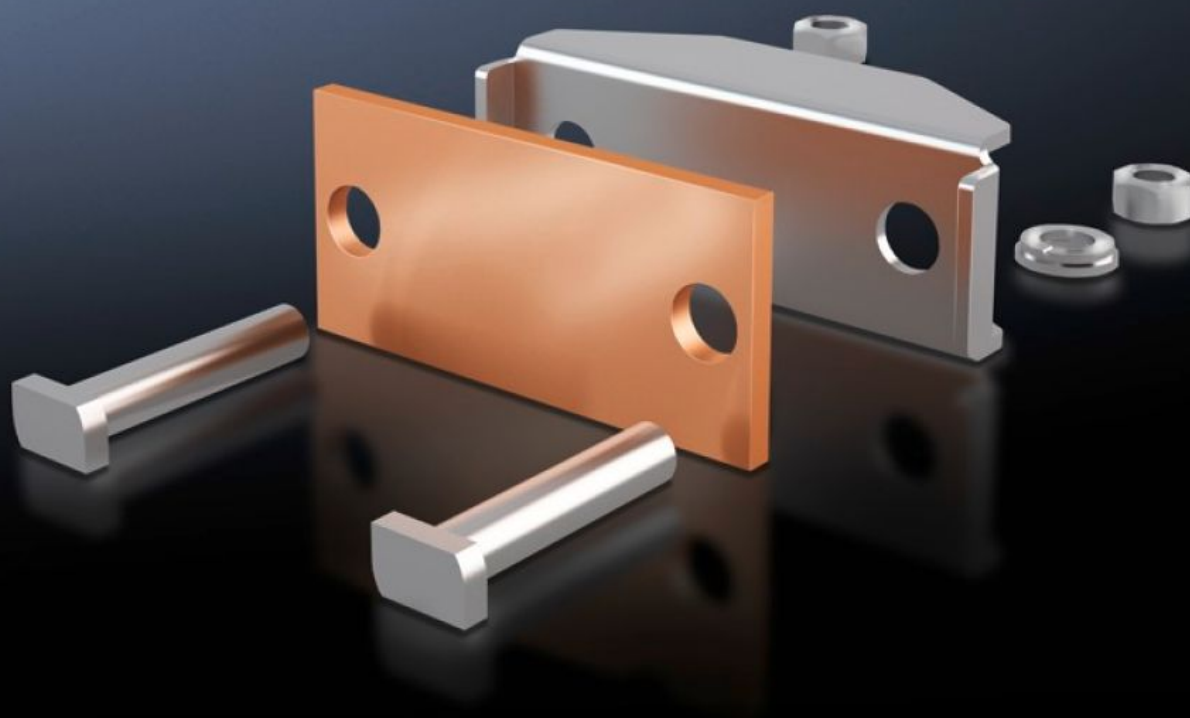
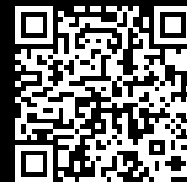


Rittal – The System.

Faster – better – everywhere.



SV 9640.350 Connection Plate

State: 2025-08-04 (Source: [rittal.com/ca-en](https://www.rittal.com/ca-en))

ENCLOSURES

POWER DISTRIBUTION

CLIMATE CONTROL

IT INFRASTRUCTURE

SOFTWARE & SERVICES

FRIEDHELM LOH GROUP



SV 9640.350 - Connection Plate for laminated copper bars

For the connection of laminated copper bars.

Features

Model No.	SV 9640.350
Product description	For the connection of laminated copper bars.
Material	Connection plate: E-Cu Pressure piece: Stainless steel
Supply includes	Assembly components
Suitable for busbars	Maxi-PLS 45 S/45
Clamping area for laminated copper bars (W x H)	100 x 20 mm
Packaging unit	3 pc(s).
Net weight	1.659
Gross weight	1.96
Copper weight (kg per piece)	0.27
Customs tariff number	73269098
EAN	4028177238695
ETIM 9	EC002498
ECLASS 8.0	27379201

Approvals

Approvals	UL + C-UL (listed)
Explanations	Declaration of conformity Declaration of conformity UK