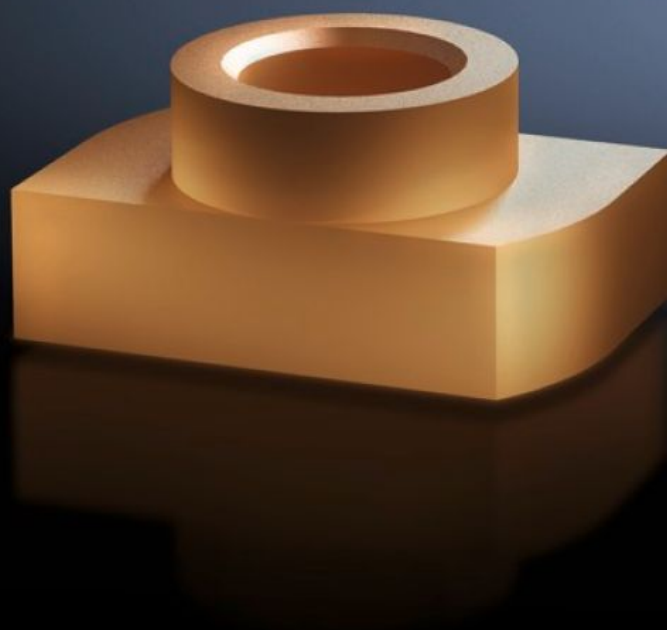


# Rittal – The System.

Faster – better – everywhere.



## SV 9650.905 Sliding Nut

State: 2025-08-03 (Source: [rittal.com/ca-en](https://www.rittal.com/ca-en))

ENCLOSURES

POWER DISTRIBUTION

CLIMATE CONTROL

IT INFRASTRUCTURE

SOFTWARE & SERVICES

FRIEDHELM LOH GROUP



# SV 9650.905 - Sliding Nut for Maxi-PLS busbars

May be retrofitted by sliding into the Maxi-PLS busbar section.

## Features

Model No.	SV 9650.905
Product description	For attaching flat copper busbars and connection components to Maxi-PLS busbars. For subsequent insertion into the busbar section and tightening the threaded bolts.
Material	E-Cu
Suitable for busbars	Maxi-PLS 60
Dimensions	Thread: M8
Packaging unit	3 pc(s).
Net weight	0.069
Gross weight	0.075
Customs tariff number	74198090
EAN	4028177662810
ETIM 9	EC000096
ECLASS 8.0	23110804