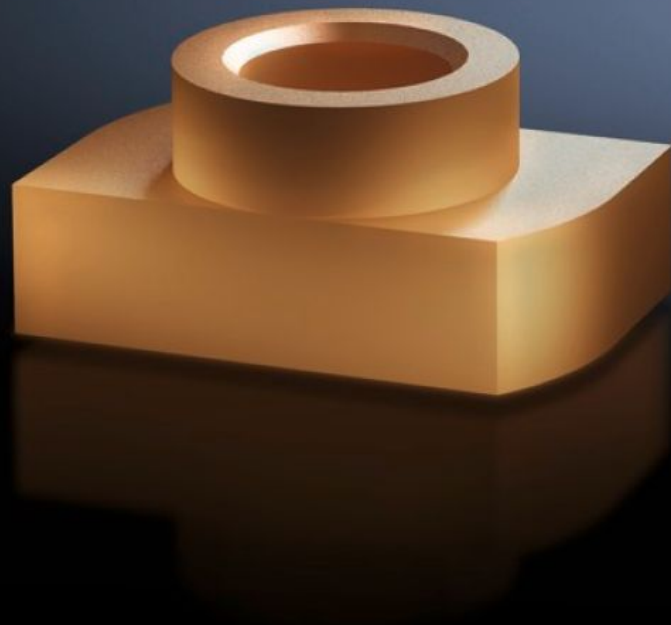


# Rittal – The System.

Faster – better – everywhere.



## SV 9650.920 Sliding Nut

State: 2026-07-07 (Source: [rittal.com/ca-en](https://www.rittal.com/ca-en))

ENCLOSURES

POWER DISTRIBUTION

CLIMATE CONTROL

IT INFRASTRUCTURE

SOFTWARE & SERVICES

FRIEDHELM LOH GROUP



# SV 9650.920 - Sliding Nut for Maxi-PLS busbars

May be retrofitted by sliding into the Maxi-PLS busbar section.

## Features

Model No.	SV 9650.920
Product description	For attaching flat copper busbars and connection components to Maxi-PLS busbars. For subsequent insertion into the busbar section and tightening the threaded bolts.
Material	E-Cu
Suitable for busbars	Maxi-PLS 60
Dimensions	Thread: M12
Packaging unit	15 pc(s).
Net weight	0.21 kg
Gross weight	0.259 kg
Customs tariff number	73181692
ETIM 9	EC000096
ECLASS 8.0	23110804
Product description	SV Sliding nut, M12, (Maxi-PLS 3200)

## Approvals

Approvals	UL + C-UL (listed)
-----------	--------------------