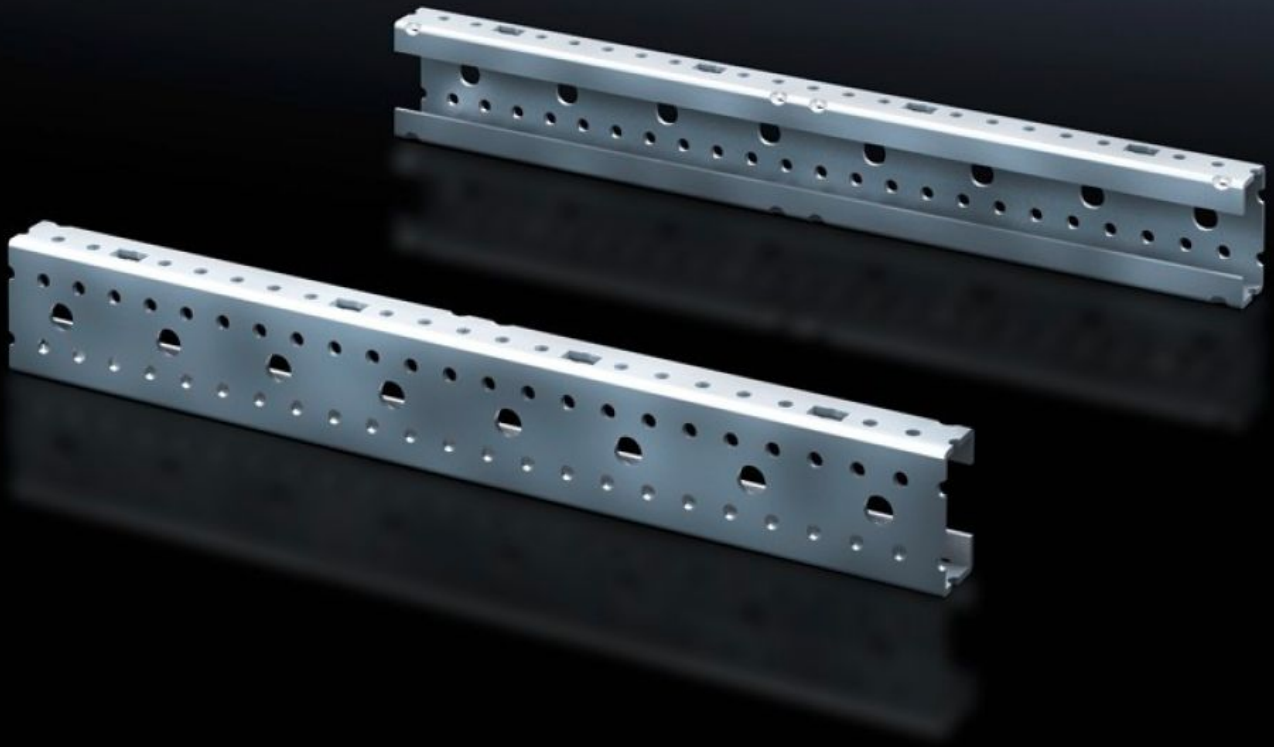


Rittal – The System.

Faster – better – everywhere.



SV 9666.712

Mounting angle ISV

State: 2026-06-07 (Source: [rittal.com/ca-en](https://www.rittal.com/ca-en))

ENCLOSURES

POWER DISTRIBUTION

CLIMATE CONTROL

IT INFRASTRUCTURE

SOFTWARE & SERVICES

FRIEDHELM LOH GROUP



SV 9666.712 - Mounting angle ISV for VX

For vertical subdivision of the support frame in the VX/TS/SE enclosure.

Features

| | |
|-------------------------------------|--|
| Model No. | SV 9666.712 |
| Product description | For vertical sub-division of the support frame in enclosures. |
| Material | Carbon steel |
| Surface finish | Zinc-plated |
| Dimensions | Height: 1,800 mm |
| Size | Height units (U) @ 150 mm: 12 |
| Packaging unit | 2 pc(s). |
| Net weight | 4.106 kg |
| Gross weight | 4.305 kg |
| PCF/VE (cradle-to-gate) | 16.4 kg CO2 eq (Cat B) |
| Information regarding the PCF class | Category B: PCF value (cradle-to-gate) calculated approximately on the basis of the product weight and self-declared |
| Customs tariff number | 39269097 |
| ETIM 9 | EC002270 |
| ECLASS 8.0 | 27400613 |
| Product description | SV Mounting angle (ISV), 12 U (1850 mm), for TS, SE |