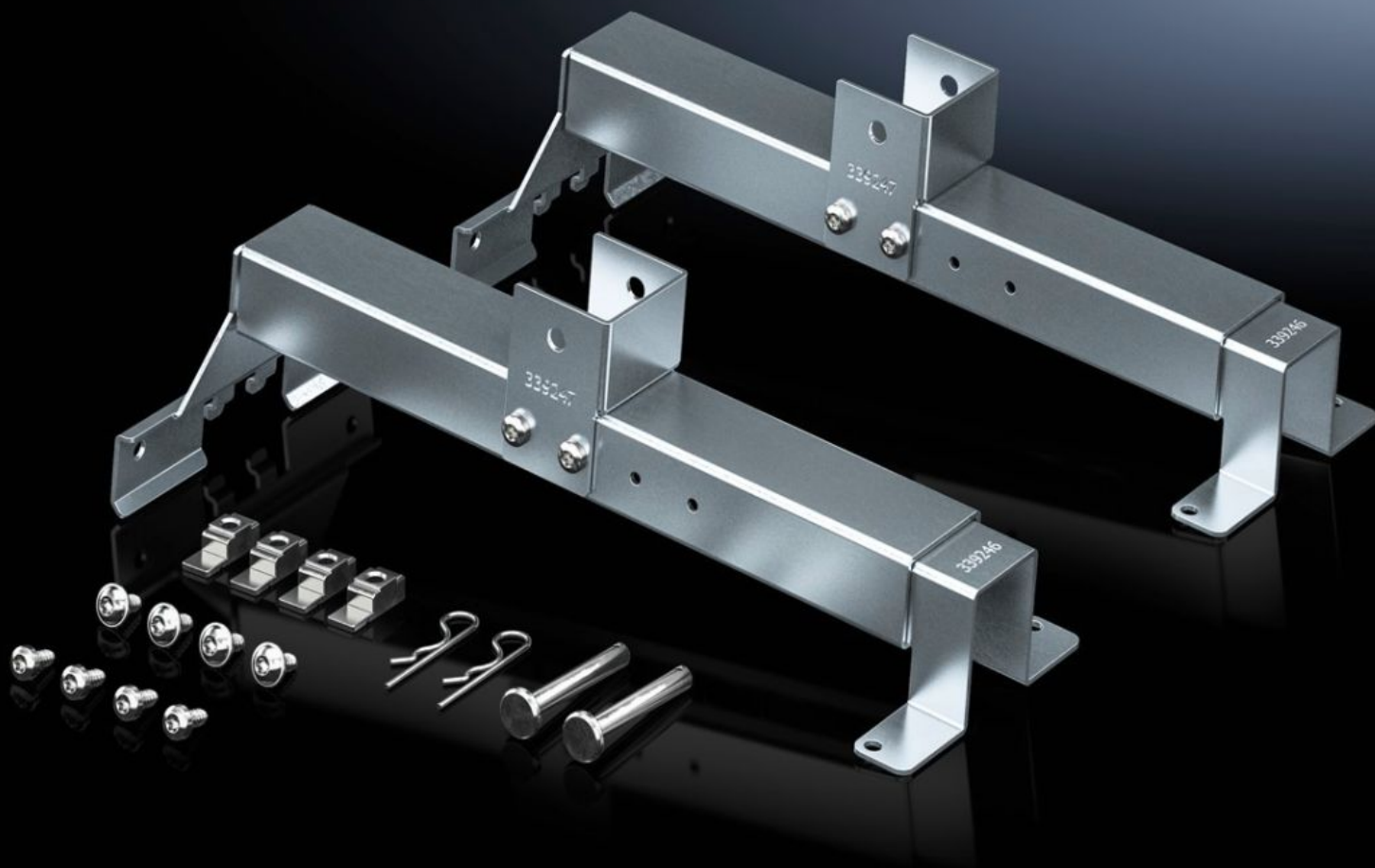


# Rittal – The System.

Faster – better – everywhere.



## SV 9666.732 Depth stay

State: 2026-02-07 (Source: [rittal.com/ca-en](https://www.rittal.com/ca-en))

ENCLOSURES

POWER DISTRIBUTION

CLIMATE CONTROL

IT INFRASTRUCTURE

SOFTWARE & SERVICES

FRIEDHELM LOH GROUP



# SV 9666.732 - Depth stay For ISV installation kit

For attaching the ISV installation kit in the enclosure.

## Features

Model No.	SV 9666.732
Product description	For attaching the installation kit in the enclosure.
Material	Carbon steel
Surface finish	Zinc-plated
Supply includes	Assembly components
Suitable for Model No.	9666.902 9666.912 9666.922 9666.932
Suitable for	Enclosure type: VX Depth: = 400 mm = 500 mm = 600 mm
Packaging unit	2 pc(s).
Net weight	3.04
Gross weight	3.04
PCF/VE (cradle-to-gate)	12.3 kg CO2 eq (Cat B)
Information regarding the PCF class	Category B: PCF value (cradle-to-gate) calculated approximately on the basis of the product weight and self-declared
Customs tariff number	73269098
EAN	4028177923256
ETIM 9	EC002270
ECLASS 8.0	27400613