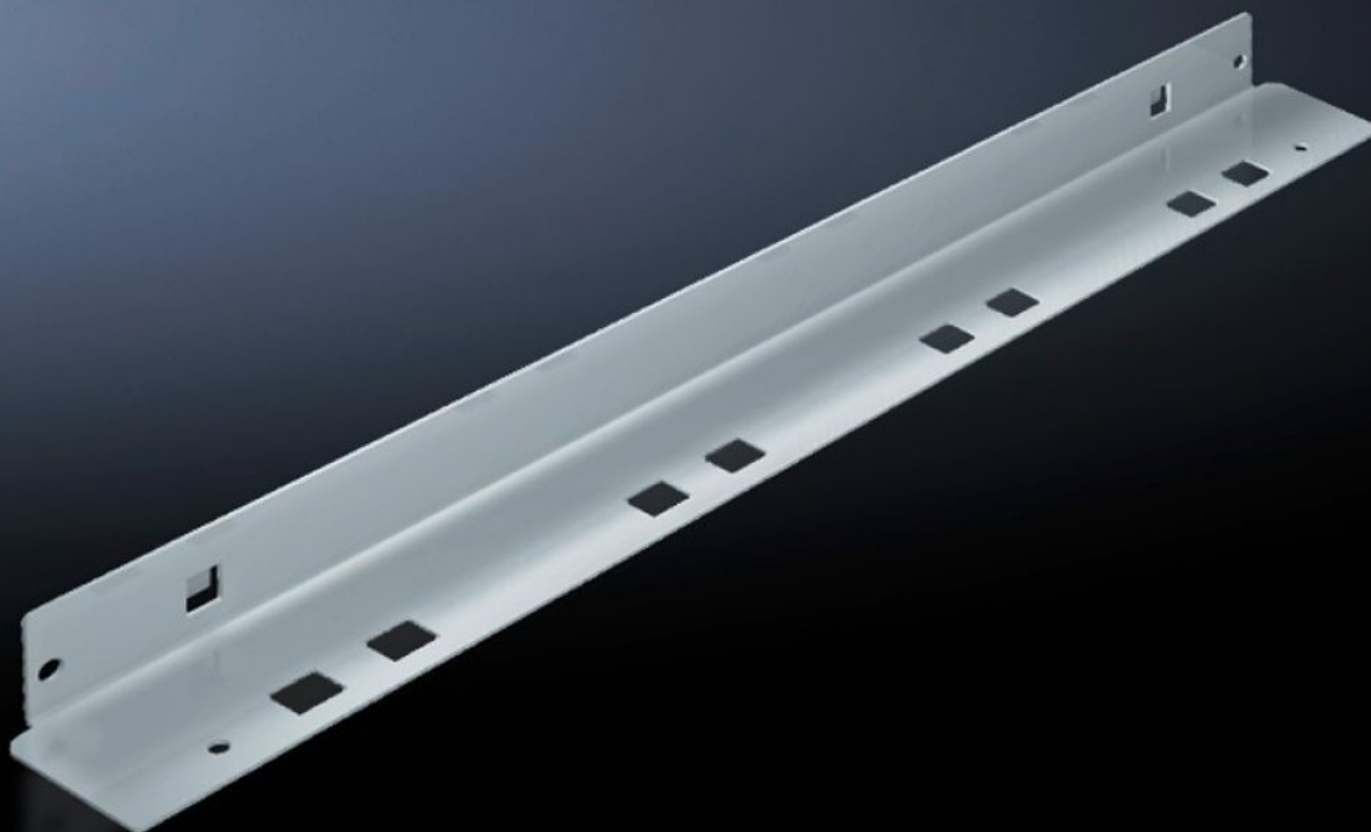


# Rittal – The System.

Faster – better – everywhere.



## SV 9673.408 Mounting Bracket

State: 2026-02-07 (Source: [rittal.com/ca-en](https://www.rittal.com/ca-en))

ENCLOSURES

POWER DISTRIBUTION

CLIMATE CONTROL

IT INFRASTRUCTURE

SOFTWARE & SERVICES

FRIEDHELM LOH GROUP



# SV 9673.408 - Mounting Bracket for compartment divider

May be attached to a TS frame, a side panel module or between frame profiles and an auxiliary construction, allows slide-in attachment of compartment dividers.



## Features

Model No.	SV 9673.408
Product description	The mounting bracket may be attached to a TS frame, to a side panel module or between a frame section and an auxiliary construction. Pre-machined mounting openings allow slide-in attachment of functional space dividers.
Material	Carbon steel, 1.5 mm
Surface finish	Zinc-plated
Supply includes	Assembly components
For compartment depth	800 mm
Length	752 mm
Dimensions	Length: 752 mm
Packaging unit	8 pc(s).
Net weight	4.88
Gross weight	5
Customs tariff number	73182900
EAN	4028177574472
ETIM 9	EC002525
ECLASS 8.0	27400613