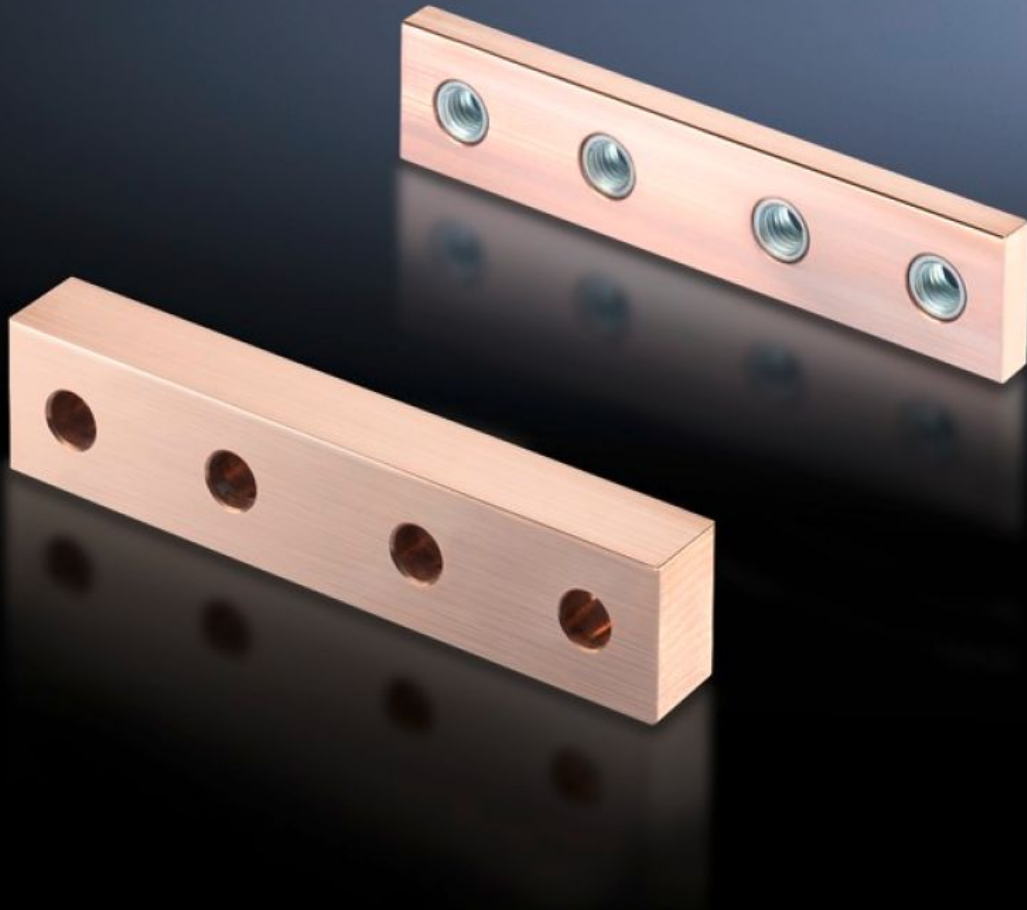


Rittal – The System.

Faster – better – everywhere.



SV 9676.621 Longitudinal Connectors

State: 2026-05-13 (Source: rittal.com/ca-en)

ENCLOSURES

POWER DISTRIBUTION

CLIMATE CONTROL

IT INFRASTRUCTURE

SOFTWARE & SERVICES

FRIEDHELM LOH GROUP



SV 9676.621 - Longitudinal Connectors

For connectig Flat-PLS busbar systems, no drilling required.

Features

Model No.	SV 9676.621
Applications	For connecting Flat-PLS busbar systems, no drilling required.
Material	E-Cu
Rails per conductor	2
Suitable for busbar system	Flat-PLS 60 Flat-PLS 100
Packaging unit	1 pc(s).
Net weight	1.1 kg
Gross weight	1.12 kg
Copper weight (kg per piece)	1.12
Customs tariff number	74198090
ETIM 9	EC001900
ECLASS 8.0	27400613
Product description	SV Longitudinal connector E-Cu, for busbar W: 40-100 mm, (for 2 strands per conductor)

Approvals

Approvals	ABS DNV Lloyds Register
Explanations	Declaration of conformity Declaration of conformity UK