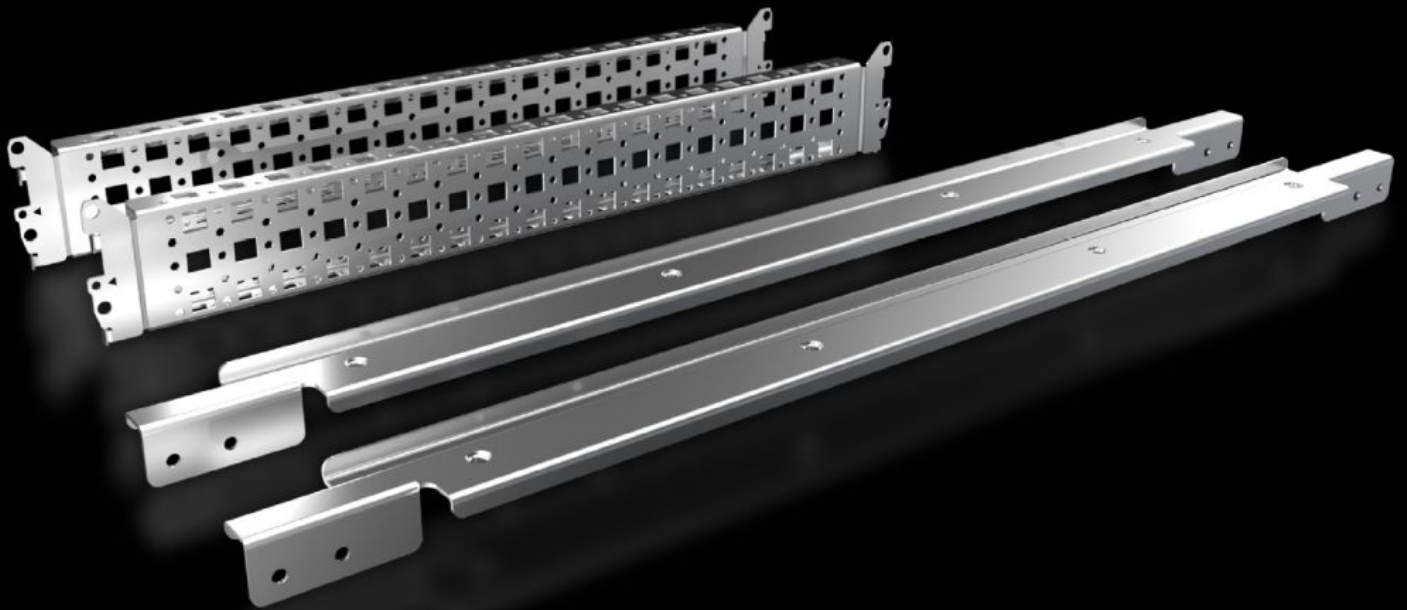


# Rittal – The System.

Faster – better – everywhere.



## SV 9677.511 System Attachment

State: 2026-06-22 (Source: [rittal.com/ca-en](http://rittal.com/ca-en))

ENCLOSURES

POWER DISTRIBUTION

CLIMATE CONTROL

IT INFRASTRUCTURE

SOFTWARE & SERVICES

FRIEDHELM LOH GROUP



# SV 9677.511 - System Attachment for TS

For attaching busbar systems with 185 mm center-to-center spacing in enclosures.

## Features

Model No.	SV 9677.511
Product description	For fastening busbar systems with 185 mm center distance in the enclosure.
Material	Carbon steel
Surface finish	Zinc-plated
Supply includes	2 system fittings (left/right) 2 punched sections Assembly components
Mounting tip	For variable depth settings in the busbar system inside the control cabinet, the 23 x 64 mm system chassis for VX (for indoor mounting levels) is required. The selection will be dictated by the depth of the cabinet.
Suitable for width	600 mm
Packaging unit	1 pc(s).
Net weight	3.24 kg
Gross weight	3.44 kg
PCF/VE (cradle-to-gate)	13.1 kg CO2 eq (Cat B)
Information regarding the PCF class	Category B: PCF value (cradle-to-gate) calculated approximately on the basis of the product weight and self-declared
Customs tariff number	83024900
ETIM 9	EC002270
ECLASS 8.0	27400613
Product description	SV system attachment for VX (W: 600 mm), for busbar holder SV 9677500