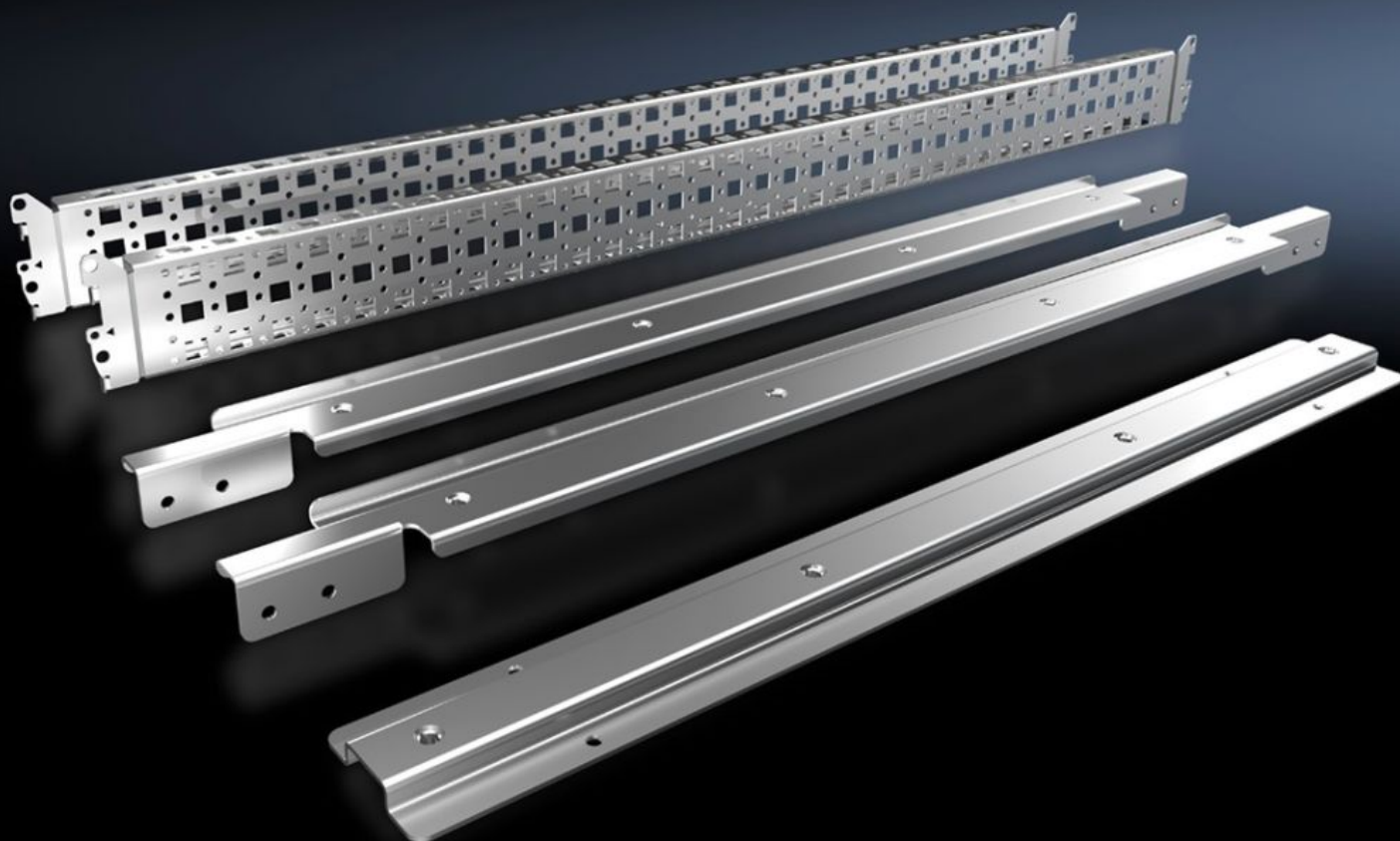


Rittal – The System.

Faster – better – everywhere.



SV 9677.531 System Attachment

State: 2025-08-18 (Source: [rittal.com/ca-en](https://www.rittal.com/ca-en))

ENCLOSURES

POWER DISTRIBUTION

CLIMATE CONTROL

IT INFRASTRUCTURE

SOFTWARE & SERVICES

FRIEDHELM LOH GROUP



SV 9677.531 - System Attachment for VX, TS

For attaching busbar systems with 185 mm center-to-center spacing in enclosures.

Features

| | |
|-------------------------------------|---|
| Model No. | SV 9677.531 |
| Product description | For fastening busbar systems with 185 mm center distance in the enclosure. |
| Material | Carbon steel |
| Surface finish | Zinc-plated |
| Supply includes | 2 system fittings (left/right) 2 punched sections Assembly components System attachment (center) |
| Mounting tip | For variable depth settings in the busbar system inside the control cabinet, the 23 x 64 mm system chassis for VX (for indoor mounting levels) is required. The selection will be dictated by the depth of the cabinet. |
| Packaging unit | 1 pc(s). |
| Net weight | 4.9 |
| Gross weight | 5.14 |
| PCF/VE (cradle-to-gate) | 19.4 kg CO2 eq (Cat B) |
| Information regarding the PCF class | Category B: PCF value (cradle-to-gate) calculated approximately on the basis of the product weight and self-declared |
| Customs tariff number | 83024900 |
| EAN | 4028177923300 |
| ETIM 9 | EC002270 |
| ECLASS 8.0 | 27400613 |